

30 September 2014 | 1100 hrs | 182/2014

In 2013, persons aged 60 and over amounted to 105,068, or 24.7 per cent of the total population.

## International Day of Older Persons: 2014

The United Nations commemorates 1<sup>st</sup> October as the International Day of Older Persons. This year's theme is "Leaving No One Behind: Promoting a Society for All". The National Statistics Office is presenting a set of statistics relating to the elderly population in Malta.

Nearly a quarter of the total population, or 105,068 persons, were at least 60 years old. Women accounted for 54.3 per cent of this population segment (Table 1).

There were 73 grooms and 32 brides aged 60 and over who tied the knot last year. Those marrying for the first time amounted to 18.1 per cent, while 58.1 per cent were previously divorced (Table 2).

Out of 3,236 persons who passed away during 2013, 83.3 were aged 65 and over (Table 7). At 43.3 per cent, diseases of the circulatory system were the main cause of these deaths, followed by neoplasms, accounting for 24.1 per cent (Table 8).

Last year, total government expenditure on retirement and old-age pensions amounted to €433 million, up by 4.0 per cent when compared to 2012 levels (Table 3).

Figures derived from the 2013 Statistics on Income and Living Conditions Survey show that persons over 59 years of age had an at-risk-of-poverty rate of 15.1 per cent and an at-risk-of-poverty or social exclusion rate of 21.7 per cent (Tables 4 and 5). Survey results also revealed that 52.2 per cent of the elderly aged 65 and over could not afford to pay for a one-week annual holiday away from home, while 21.3 per cent could not afford to face unexpected financial expenses of at least €450. Furthermore, 23.5 per cent said that they were not able to keep their home adequately warm in winter (Table 6).

Past Labour Force Surveys reveal an increasing trend in the participation of persons aged 60 and over in employment, rising from 4.7 per cent in 2003 to 8.8 per cent in 2013 (Chart 1).

Fifty-four persons aged 60 and over were reading for a degree at the University of Malta during the academic year 2013-2014. Around 51.9 per cent of these students were attending a course leading to a Second Degree or Postgraduate Certificate, while 5.6 per cent were undertaking a course at doctorate level. Nearly two-thirds of the attendees were males (Table 9).

Compiled by:

**Unit C1: Living Conditions  
and Culture Statistics**

**Directorate C: Social  
Statistics**

Further information on data:

**Ms Nikita ELLUL**  
T. +356 2599 7525  
E. nikita.ellul@gov.mt

A rise in outbound tourists aged 65 and over was recorded over the past four years, increasing from 19,598 in 2010 to 33,016 in 2013. At 88.9 per cent, most of these outbound tourists travelled to EU countries, while 63.1 per cent opted for non-package travel. The most two popular destinations were Italy and the United Kingdom, with shares of 29.4 and 28.8 per cent of the total respectively (Table 10) ■

Kindly indicate source when quoting from this release.  
The advance release calendar may be consulted at [www.nso.gov.mt](http://www.nso.gov.mt)

Issued by: **External Cooperation and Communication Unit, National Statistics Office, Lascaris, Valletta VLT 2000, Malta.**  
T. +356 2599 7219 F. +356 2599 7205 E. [nso@gov.mt](mailto:nso@gov.mt)

Table 1. Total population by age and sex: 31 December 2013

Age	Males	Females	Total
<b>Total</b>	<b>212,424</b>	<b>212,960</b>	<b>425,384</b>
<b>0-59</b>	<b>164,387</b>	<b>155,929</b>	<b>320,316</b>
<b>60-64</b>	<b>14,405</b>	<b>14,639</b>	<b>29,044</b>
60	2,794	2,806	5,600
61	2,808	2,891	5,699
62	2,771	2,872	5,643
63	3,027	3,029	6,056
64	3,005	3,041	6,046
<b>65-69</b>	<b>14,289</b>	<b>15,206</b>	<b>29,495</b>
65	3,030	3,156	6,186
66	2,996	3,235	6,231
67	2,840	3,056	5,896
68	2,678	2,876	5,554
69	2,745	2,883	5,628
<b>70-74</b>	<b>7,301</b>	<b>8,580</b>	<b>15,881</b>
70	1,847	2,138	3,985
71	1,266	1,428	2,694
72	1,301	1,554	2,855
73	1,407	1,690	3,097
74	1,480	1,770	3,250
<b>75-79</b>	<b>6,171</b>	<b>8,015</b>	<b>14,186</b>
75	1,433	1,752	3,185
76	1,346	1,738	3,084
77	1,312	1,630	2,942
78	1,121	1,536	2,657
79	959	1,359	2,318
<b>80-84</b>	<b>3,498</b>	<b>5,874</b>	<b>9,372</b>
80	907	1,399	2,306
81	794	1,315	2,109
82	676	1,206	1,882
83	617	1,070	1,687
84	504	884	1,388
<b>85-89</b>	<b>1,759</b>	<b>3,217</b>	<b>4,976</b>
85	452	763	1,215
86	402	757	1,159
87	366	632	998
88	307	549	856
89	232	516	748
<b>90+</b>	<b>614</b>	<b>1,500</b>	<b>2,114</b>

Note: Population is based on updates from the November 2011 Census.

**Table 2. Marriages involving spouses aged 60+ by year of marriage and previous marital status: 2008-2013**

Year	Previous marital status			
	Single*	Widowed	Divorced	Total
<b>Grooms</b>				
2008	9	11	18	<b>38</b>
2009	12	13	20	<b>45</b>
2010	26	13	12	<b>51</b>
2011	11	17	21	<b>49</b>
2012	25	7	43	<b>75</b>
2013	11	19	43	<b>73</b>
<b>Brides</b>				
2008	13	3	14	<b>30</b>
2009	4	3	12	<b>19</b>
2010	4	5	5	<b>14</b>
2011	6	5	10	<b>21</b>
2012	9	2	7	<b>18</b>
2013	8	6	18	<b>32</b>

\* includes persons whose previous marriage was annulled

**Table 3. Total government expenditure on retirement and old age pensions: 2009-2013**

	2009	2010	2011	2012	2013
	<b>€000's</b>				
<b>Contributory Benefits</b>	<b>501,933</b>	<b>562,437</b>	<b>561,161</b>	<b>604,939</b>	<b>624,928</b>
<i>...of which</i>					
Pensions in respect of Retirement	<b>319,507</b>	<b>369,892</b>	<b>367,721</b>	<b>395,765</b>	<b>410,958</b>
<i>...of which</i>					
Retirement Pension	48,156	54,025	47,775	46,059	42,652
National Minimum Pension	29,283	29,142	29,597	30,130	29,601
Increased Retirement Pension	11,963	12,546	16,150	13,640	9,828
Two-thirds Pension	217,825	260,632	259,789	290,222	313,289
Increased National Minimum Pension	11,741	13,031	13,954	15,236	15,174
Decreased National Minimum Pension	539	515	455	478	415
<b>Non-Contributory Benefits</b>	<b>159,904</b>	<b>168,915</b>	<b>166,834</b>	<b>177,620</b>	<b>189,529</b>
<i>...of which</i>					
Old-Age	18,490	19,717	19,974	20,457	21,879
<b>Total Social Security Benefits</b>	<b>661,837</b>	<b>731,352</b>	<b>727,995</b>	<b>782,559</b>	<b>814,457</b>
Retirement and Old-Age pensions as a percentage of Total Social Security Benefits	51.1%	53.3%	53.3%	53.2%	53.1%

**Table 4. Persons at-risk-of-poverty by age group and sex: 2013**

Age group	Males		Females		Total *	
	Number	% total	Number	% total	Number	% total
0-59	24,720	15.4	25,666	16.6	50,387	16.0
60+	6,950	15.4	7,629	14.7	14,580	15.1
<b>Total</b>	<b>31,670</b>	<b>15.4</b>	<b>33,296</b>	<b>16.1</b>	<b>64,966</b>	<b>15.7</b>
0-64	26,858	15.3	28,062	16.5	54,920	15.9
65+	4,813	15.8	5,234	14.2	10,046	14.9
<b>Total</b>	<b>31,670</b>	<b>15.4</b>	<b>33,296</b>	<b>16.1</b>	<b>64,966</b>	<b>15.7</b>
0-69	28,963	15.4	30,321	16.5	59,284	15.9
70+	2,707	15.5	2,975	13.0	5,682	14.1
<b>Total *</b>	<b>31,670</b>	<b>15.4</b>	<b>33,296</b>	<b>16.1</b>	<b>64,966</b>	<b>15.7</b>

\* Totals may not add up due to rounding

**Table 5. Persons at-risk-of-poverty or social exclusion by age group and sex: 2013**

Age group	Males		Females		Total *	
	Number	% total	Number	% total	Number	% total
0-59	38,099	23.7	39,863	25.7	77,962	24.7
60+	9,578	21.2	11,479	22.2	21,057	21.7
<b>Total</b>	<b>47,677</b>	<b>23.1</b>	<b>51,343</b>	<b>24.9</b>	<b>99,020</b>	<b>24.0</b>
0-64	41,411	23.6	43,590	25.7	85,001	24.6
65+	6,266	20.5	7,752	21.0	14,018	20.8
<b>Total</b>	<b>47,677</b>	<b>23.1</b>	<b>51,343</b>	<b>24.9</b>	<b>99,020</b>	<b>24.0</b>
0-69	44,230	23.5	46,737	25.4	90,967	24.4
70+	3,447	19.7	4,605	20.1	8,052	19.9
<b>Total *</b>	<b>47,677</b>	<b>23.1</b>	<b>51,343</b>	<b>24.9</b>	<b>99,020</b>	<b>24.0</b>

\* Totals may not add up due to rounding

**Table 6. Persons aged 65+ living in households by type of deprivation: 2013**

Item	Capacity to afford	Persons aged 65+ at-risk-of-poverty		All persons aged 65+ *	
		Number	% total	Number	% total
Paying for one week annual holiday away from home	Yes	3,646	36.3	32,238	47.8
	No	6,401	63.7	35,174	52.2
Eating a meal with meat, chicken, fish (or vegetarian equivalent) every second day	Yes	9,096	90.5	60,179	89.3
	No	[951]	[9.5]	7,233	10.7
Facing unexpected financial expenses (of €450 and over)	Yes	7,226	71.9	53,022	78.7
	No	2,821	28.1	14,362	21.3
Keeping home adequately warm	Yes	7,520	74.9	51,570	76.5
	No	2,527	25.1	15,842	23.5
<b>Problems with dwelling ...</b>	<b>Have problem</b>	<b>Number</b>	<b>% total</b>	<b>Number</b>	<b>% total</b>
No bath or shower in dwelling	Yes	:	:	[890]	[1.3]
	No	9,921	98.8	66,522	98.7
Leaking roof, damp walls/floors/foundation, or rot in window frames or floor	Yes	2,153	21.4	13,150	19.5
	No	7,894	78.6	54,262	80.5
Dwelling too dark/not enough light	Yes	[1,050]	[10.5]	4,591	6.8
	No	8,997	89.5	62,821	93.2
Noise from neighbours or from the street	Yes	3,547	35.3	22,593	33.5
	No	6,500	64.7	44,819	66.5
Pollution, grime or other environmental problems	Yes	4,048	40.3	28,776	42.7
	No	5,998	59.7	38,636	57.3
Crime, violence or vandalism in the area	Yes	[1,071]	[10.7]	7,821	11.6
	No	8,975	89.3	59,591	88.4

Under represented figures are marked as follows:

[ ] estimate based on 20-50 counts

: estimate based on less than 20 counts; not provided

\* Totals do not represent the total population of persons living in households as there were a number of households that did not respond to these questions

**Table 7. Deaths by age in completed years at time of death and sex: 2000-2013**

Year	Total			<i>of which...</i>					
				65-74			75+		
	Total	Males	Females	Total	Males	Females	Total	Males	Females
2000	<b>2,957</b>	1,507	1,450	<b>715</b>	429	286	<b>1,666</b>	737	929
2001	<b>2,935</b>	1,496	1,439	<b>657</b>	392	265	<b>1,723</b>	753	970
2002	<b>3,031</b>	1,604	1,427	<b>685</b>	405	280	<b>1,772</b>	849	923
2003	<b>3,164</b>	1,595	1,569	<b>674</b>	396	278	<b>1,900</b>	836	1,064
2004	<b>2,999</b>	1,491	1,508	<b>737</b>	414	323	<b>1,708</b>	737	971
2005	<b>3,130</b>	1,576	1,554	<b>705</b>	428	277	<b>1,830</b>	791	1,039
2006	<b>3,216</b>	1,667	1,549	<b>651</b>	393	258	<b>1,957</b>	889	1,068
2007	<b>3,111</b>	1,610	1,501	<b>618</b>	368	250	<b>1,866</b>	854	1,012
2008	<b>3,243</b>	1,668	1,575	<b>587</b>	336	251	<b>1,964</b>	872	1,092
2009	<b>3,221</b>	1,672	1,549	<b>569</b>	352	217	<b>2,037</b>	940	1,097
2010	<b>3,010</b>	1,489	1,521	<b>563</b>	328	235	<b>1,845</b>	772	1,073
2011	<b>3,267</b>	1,664	1,603	<b>599</b>	371	228	<b>2,062</b>	911	1,151
2012	<b>3,418</b>	1,746	1,672	<b>597</b>	364	233	<b>2,188</b>	991	1,197
2013	<b>3,236</b>	1,636	1,600	<b>592</b>	375	217	<b>2,104</b>	906	1,198

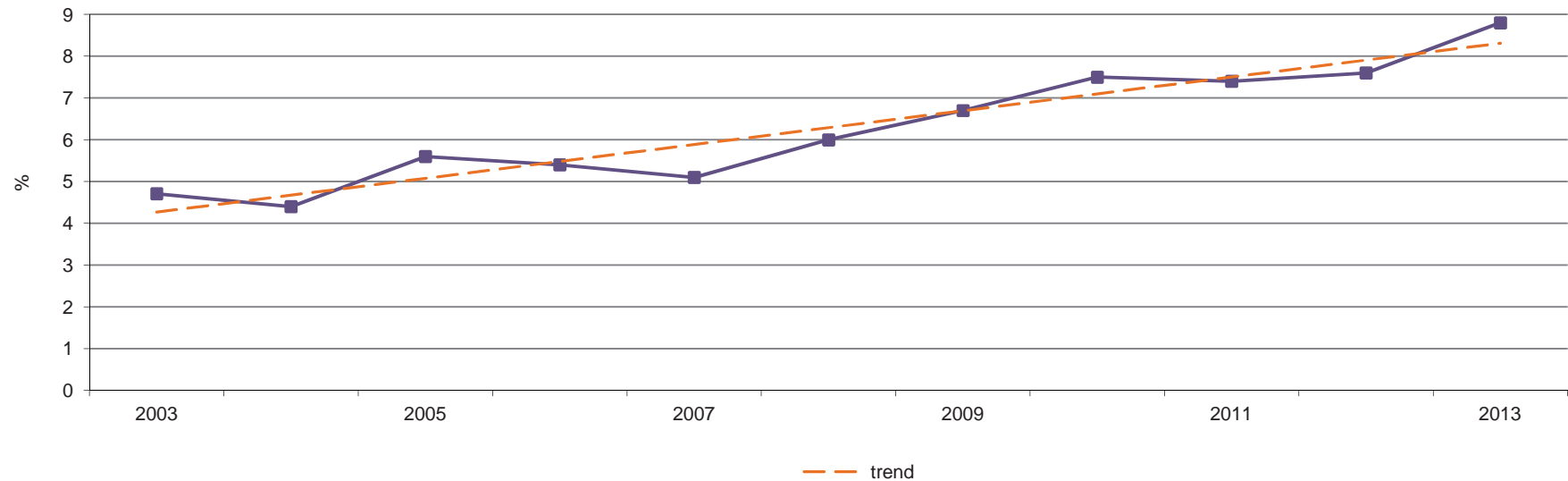
**Table 8. Deaths of persons aged 65 and over by cause, sex and age: 2013**

Cause of death	Sex	Age			Total
		65-74	75-84	85+	
Certain infectious and parasitic diseases	Males	3	-	4	7
	Females	1	2	8	11
Neoplasms	Males	142	152	52	346
	Females	101	138	65	304
Diseases of the blood and blood-forming organs and certain disorders involving the immune mechanism	Males	-	1	-	1
	Females	-	-	2	2
Endocrine, nutritional and metabolic diseases	Males	9	23	7	39
	Females	11	20	17	48
Mental and behavioural disorders	Males	8	13	13	34
	Females	4	22	57	83
Diseases of the nervous system	Males	14	13	6	33
	Females	6	14	11	31
Diseases of the circulatory system	Males	128	222	182	532
	Females	71	237	328	636
Diseases of the respiratory system	Males	34	63	75	172
	Females	8	53	85	146
Diseases of the digestive system	Males	16	14	6	36
	Females	3	16	24	43
Diseases of the skin and subcutaneous tissue	Males	1	1	2	4
	Females	-	6	8	14
Diseases of the musculoskeletal and connective tissue	Males	2	-	-	2
	Females	2	5	-	7
Diseases of the genitourinary system	Males	9	15	10	34
	Females	4	19	32	55
Congenital malformations, deformations and chromosomal abnormalities	Males	-	-	-	-
	Females	-	1	-	1
Symptoms, signs and abnormal clinical and laboratory findings, not elsewhere classified	Males	-	2	7	9
	Females	-	3	9	12
External causes of morbidity and mortality	Males	9	10	13	32
	Females	6	6	10	22
<b>All causes</b>	<b>Total</b>	<b>592</b>	<b>1,071</b>	<b>1,033</b>	<b>2,696</b>
	<b>Males</b>	<b>375</b>	<b>529</b>	<b>377</b>	<b>1,281</b>
	<b>Females</b>	<b>217</b>	<b>542</b>	<b>656</b>	<b>1,415</b>

Table 9. Persons aged 60 and over attending courses at the University of Malta by sex: 2011-2014

Course	2011-2012			2012-2013			2013-2014		
	Males	Females	Total	Males	Females	Total	Males	Females	Total
Undergraduate Certificate or Diploma	7	5	12	4	3	7	5	3	8
First Degree	14	6	20	12	-	12	12	3	15
Second Degree or Postgraduate Certificate	16	8	24	11	10	21	16	12	28
PhD	1	2	3	3	-	3	2	1	3
<b>Total</b>	<b>38</b>	<b>21</b>	<b>59</b>	<b>30</b>	<b>13</b>	<b>43</b>	<b>35</b>	<b>19</b>	<b>54</b>

Chart 1. Percentage of employed persons aged 60+: 2003-2013



Note: Figures from 2005 onwards have been revised since previous news release.



Table 10. Outbound tourists by various characteristics: 2010-2013

Characteristics		Under 65 years old				65 and over				Total*			
		2010	2011	2012	2013	2010	2011	2012	2013	2010	2011	2012	2013
Sex	Male	157,765	158,734	174,166	186,974	10,926	12,926	15,630	19,230	168,691	171,660	189,796	206,205
	Female	116,960	125,586	128,507	143,473	8,672	11,237	12,793	13,786	125,632	136,823	141,300	157,259
Type of trip	Package	61,912	67,646	74,066	75,410	6,423	8,693	11,158	12,191	68,335	76,339	85,224	87,600
	Non-package	212,814	216,673	228,607	255,037	13,175	15,470	17,265	20,826	225,988	232,144	245,872	275,863
Destination	EU	233,561	253,739	261,196	288,720	16,531	21,024	24,559	29,363	250,091	274,763	285,755	318,083
	...of which												
	France	17,146	13,149	15,238	15,963	[957]	[908]	[1,430]	[1,411]	18,102	14,057	16,668	17,374
	Germany	14,848	15,579	17,447	16,963	[1,193]	1,755	[1,251]	1,861	16,041	17,334	18,698	18,825
	Italy	73,461	84,739	89,390	99,702	4,324	6,208	8,323	9,711	77,786	90,947	97,713	109,413
	UK	68,465	72,928	70,440	79,979	6,530	7,318	7,821	9,503	74,995	80,246	78,261	89,482
	Non-EU	41,165	30,581	41,477	41,727	3,067	3,139	3,864	3,653	44,232	33,720	45,341	45,380
	Total*	274,725	284,320	302,673	330,447	19,598	24,163	28,423	33,016	294,323	308,483	331,096	363,463

[ ] Under represented due to small sample size. Treat figure with caution.

\* Totals may not add up due to rounding

Note: Figures for 2012 were revised.

## Methodological Notes

### 1. Sources:

Table 1: Demographic Statistics, NSO.

Table 2: Public Registry.

Table 3: Public Finance Data, NSO.

Table 4, Table 5 and Table 6: Statistics on Income and Living Conditions Survey 2013, NSO.

Table 7 and Table 8: Department of Health Information and Research.

Table 9: University of Malta.

Table 10: Tourstat Survey, NSO.

Chart 1: Labour Force Survey, NSO.

### 2. Definitions:

- i. The **Work Intensity (WI)** of a household is the ratio of the total number of months that all household members aged between 18 and 59, with the exclusion of students aged between 18 and 24, have worked during the income reference year, and the total number of months the same household members theoretically could have worked in the same period. Households composed only of children under 18, of students aged less than 25, and/or people aged 60 or more, are completely excluded from the computation of this indicator. Individuals are classified into work intensity categories that range from WI=0 (jobless household) to WI=1 (full work intensity, i.e. all working age household members worked during the whole income reference year).
- ii. **Material Deprivation:**

The following nine questions were asked to all households in order to determine whether they suffered from material deprivation:

  - ability to face unexpected financial expenses;
  - ability to pay for one week's annual holiday away from home;
  - whether they have been in arrears on mortgage or rent payments, utility bills, hire purchase instalments or other loan payments;
  - ability to have a meal with meat, chicken, fish or vegetarian equivalent every second day;
  - ability to keep home adequately warm in winter;
  - own a washing machine;
  - own a colour TV;
  - own a telephone (including mobile phone);
  - own a car.
- iii. Persons living in households who were not able to afford at least **three** of the nine deprivation items are considered to be **materially deprived**.
- iv. Persons living in households who were not able to afford at least **four** of the nine deprivation items are considered to be **severely materially deprived**.
- v. The **at-risk-of-poverty rate** refers to the share of persons with an equivalised disposable income below the 60 per cent of the median of the national equivalised income of persons living in private households, also referred to as the at-risk-of-poverty threshold.
- vi. The **at-risk-of-poverty or social exclusion rate** corresponds to the proportion of persons, who fall within at least one of the following three categories:
  - persons whose equivalised income falls below the at-risk-of-poverty threshold;
  - persons who live in severely materially deprived private households;
  - persons who live in private households where the working intensity (WI) is below 20 per cent.

- vii. **Employment** comprises of all persons who, during the week to which the collected data relate, were in one of the following categories: paid employment, self-employed, unpaid family workers or were employees but were not at work for some reason.
  - viii. A **package trip** consists of a 'tourism product' provided by a tour-operator which elaborates it and sells it directly or through travel agencies. Within a package tour, travellers receive a combination of products associated with a trip, which are made of more than one of the following tourism services: transportation services, accommodation services, food serving services, sight-seeing services, etc.
3. Figures published in this release may be subject to revision.