

Provisional estimates indicate that the Gross Domestic Product (GDP) for the second quarter of 2020 amounted to €2,825.2 million, registering a decrease of €494.3 million, or 14.9 per cent, when compared to the corresponding period last year. In volume terms, GDP fell by 16.2 per cent.

The National Statistics Office is carrying out a benchmark revision of National Accounts with the publication of the Gross Domestic Product for the second quarter of 2020. The enhancements brought about by the benchmark revision include the publication, for the first time, of GDP data in chain-linked volumes from the production approach (Table 1b). Data in chain-linked volumes has been re-referenced to 2015.

Gross Domestic Product: Q2/2020

Cut-off date:
27 August 2020

The production approach

During the second quarter of 2020, Gross Value Added (GVA) fell by 13.8 per cent in nominal terms and 15.1 per cent in volume terms, when compared to the same quarter last year (Table 1a and 1b).

GVA fell significantly in the second quarter, with widespread contractions across all main sectors of the economy. The services sector (NACE sections G to U) fell by 15.7 per cent, industry (NACE sections B to E) decreased by 12.8 per cent, construction (NACE section F) contracted by 8.6 per cent and agriculture and fishing (NACE section A) declined by 13.6 per cent in volume terms.

The drop in services was mainly driven by declines in the Accommodation and food service activities which, in volume terms fell by 100.2 per cent, Transportation and storage with a decrease of 58.2 per cent, Wholesale and retail trade, repair of motor vehicles and motorcycles which contracted by 18.6 per cent, and Professional, scientific and technical activities which declined by 13.0 per cent. Services activities which contributed positively to GVA included Information and communication, Financial and insurance activities and Arts, entertainment and recreation activities.

The decline in industry was mainly driven by Manufacturing, which fell by 10.5 per cent.

Net taxes on products contributed negatively towards GDP growth with a decline of 25.8 per cent in volume terms.

The expenditure approach

The expenditure approach is another method used to calculate GDP and is derived by adding Final consumption expenditure of Households, Government and Non-profit institutions serving households, Gross capital formation and Net exports (Tables 2a and 2b).

During the second quarter of 2020, total Final consumption expenditure witnessed an annual drop of 10.2 per cent in nominal terms and 11.8 per cent in volume terms. This was the result of a decrease in Household expenditure of 22.3 per cent, which was partly offset by an increase in the expenditure of Non-profit institutions serving households of 47.0 per cent and a rise in Government expenditure of 11.9 per cent in volume terms.

Statistics in this News Release should be interpreted in context to the unprecedented developments related to COVID-19.

Gross fixed capital formation (GFCF) declined by 10.1 per cent in nominal terms and 11.0 per cent in volume terms. The drop in GFCF was mainly triggered by a decrease of 22.3 per cent in Dwellings, a reduction of 15.5 per cent in Machinery and equipment and a contraction of 11.4 per cent in Other buildings and structures in volume terms.

Exports of goods and services fell by 11.9 per cent in nominal terms and 12.8 per cent in volume terms. Moreover, Imports of goods and services declined by 7.0 per cent in nominal terms and 7.9 per cent in volume terms.

The income approach

The third approach to measure economic activity is the income approach, which shows how GDP is distributed among compensation of employees, operating surplus of enterprises and taxes on production and imports net of subsidies (Table 3).

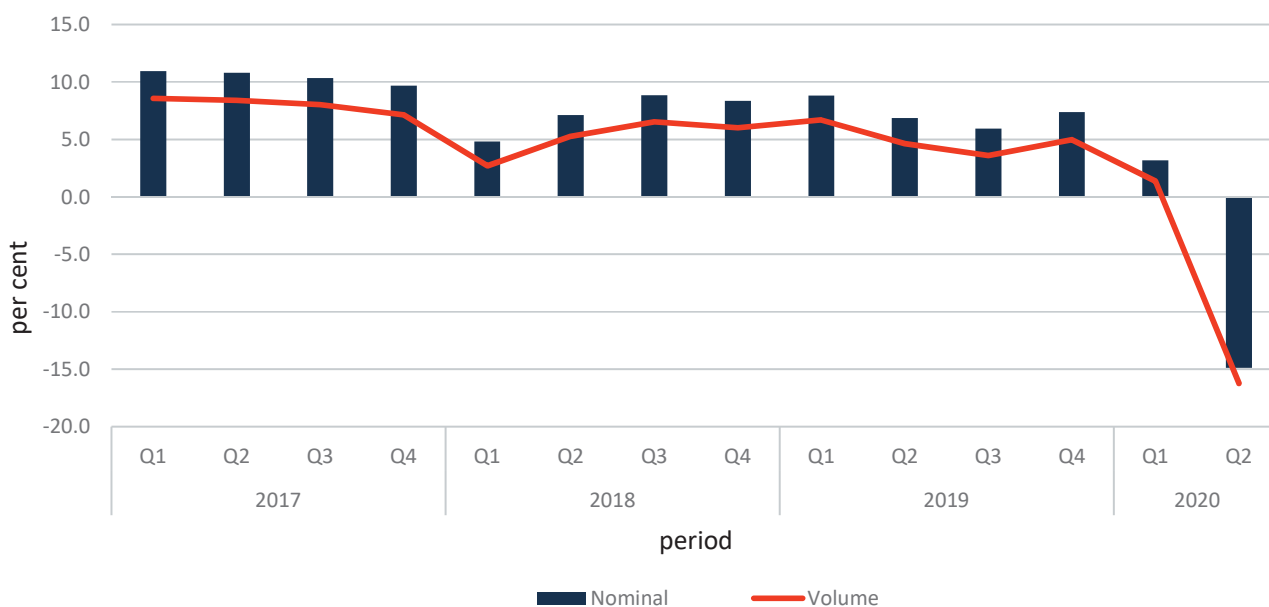
Compared to the second quarter of 2019, the €494.3 million decrease in GDP in nominal terms was primarily a result of a €315.0 million decrease in gross operating surplus and mixed income and a drop of €234.4 million in net taxation on production and imports.

Gross National Income (GNI)

The GNI differs from the GDP measure in terms of net compensation receipts, net property income receivable and net taxes receivable on production and imports from abroad.

Considering the effects of income and taxation paid and received by residents to and from the rest of the world, GNI at market prices for the second quarter of 2020 was estimated at €2,523.0 million (Table 3).

Chart 1. GDP growth rate (year-on-year)



Benchmark revision in National Accounts data for reference years 1995 to 2020Q2

The National Statistics Office (NSO) is carrying out a benchmark revision of the National Accounts with the publication of the Gross Domestic Product for the second quarter of 2020. Benchmark revisions, or major regular revisions, are revisions of data sources or methods used to estimate economic indicators that take place recurrently every five to 10 years. Such enhancements continue to improve the accuracy of the data and allow for better international data comparability.

Below are the main enhancements that this benchmark revision has brought about:

The NSO is publishing, for the first time, GVA by industry, taxes and subsidies on products and consumption of fixed capital at previous year's prices and in chain-linked volumes. Therefore, real GDP is now available not only from the expenditure side, but also from the production side. Annual and quarterly data in chain-linked volumes is available as from the year 2000 onwards.

In the years leading to this revision, the NSO reviewed the compilation process of the Supply, Use and Input-Output Tables (SUIOT). SUIOTs are a rich source of data and provide an integrated framework for checking consistency and completeness of National Accounts data. The SUIOT of 2013, 2014 and 2015 have been compiled and will be published shortly after the GDP news release.

The NSO implemented the recommendations of the ESA 1995 verification cycle, addressed after the benchmark revision of 2014, and recommendations resulting from the ESA 2010 Gross National Income (GNI) verification cycle.

New data sources were integrated in the National Accounts. These include the latest Household Budgetary Survey, the National Tourism Survey for domestic trips, the annual census for open sea fishing, and other administrative sources.

New estimation methods were implemented for activities of holding companies, renting of non-residential buildings, Restaurants and mobile food service and beverage activities, other accommodation, the quarterly disaggregation of aquaculture and renewable energy generated by households.

The NSO will publish, for the first time, the cross-classification of fixed assets by industry and by asset (stocks), and the non-financial assets balance sheet by institutional sector.

Routine revisions will also be included for the reference period 2016 to 2020Q2, most notably the incorporation of the Structural Business Statistics survey results of 2016.

A set of frequently asked questions related to this benchmark revision are available at:
https://nso.gov.mt/en/nso/Sources_and_Methods/Unit_A1/National_Accounts/Pages/%E2%80%8BFrequently-Asked-Questions-Benchmark-Revision-2020.aspx

Detailed methodological information on the different enhancements incorporated in this benchmark revision can be accessed at: https://nso.gov.mt/en/nso/Sources_and_Methods/Documents/National_Accounts/National_Accounts_-_Benchmark_Revision_2020.pdf

Table 1a. GDP identity from the production (output) side at market prices by period...

€ 000

		NACE section	Computational notes	1995	1996	1997	1998	1999	2000	2001	2002	2003
Gross value added		Total	1=2+3+5+...+12	2,724,786	2,901,299	3,060,361	3,295,553	3,426,064	3,702,707	3,802,274	3,997,199	4,251,178
Gross value added by industry	Agriculture, forestry and fishing	A	2	69,096	72,531	76,030	85,544	83,685	77,753	94,145	96,327	93,914
	Mining and quarrying; manufacturing; electricity, gas, steam and air conditioning supply; water supply; sewerage, waste management and remediation activities	B to E	3	635,302	658,424	697,383	773,702	771,435	896,275	780,712	811,805	839,524
		<i>of which: C</i>	4	572,981	581,788	594,266	650,450	667,949	801,910	678,385	703,868	744,305
	Construction	F	5	170,441	172,745	174,807	181,324	181,328	222,574	243,345	307,548	345,582
	Wholesale and retail trade; repair of motor vehicles and motorcycles; transportation and storage; accommodation and food service activities	G to I	6	801,370	824,880	900,137	951,319	1,020,218	1,016,650	1,037,137	1,053,977	1,085,635
	Information and communication	J	7	100,191	113,180	122,931	139,825	161,754	164,095	183,061	188,899	203,358
	Financial and insurance activities	K	8	61,106	83,431	89,542	114,808	100,531	144,913	147,651	134,632	155,377
	Real estate activities	L	9	188,632	195,617	201,220	206,720	213,634	223,303	229,614	244,203	270,413
	Professional, scientific and technical activities; administrative and support service activities	M to N	10	164,894	177,361	179,853	197,181	223,088	251,058	271,472	288,373	324,706
	Public administration and defence; compulsory social security; education; human health and social work activities	O to Q	11	452,696	514,922	529,464	549,466	569,248	601,494	688,826	727,115	768,438
Arts, entertainment and recreation, repair of household goods and other services	R to U	12	81,058	88,208	88,994	95,664	101,144	104,592	126,310	144,321	164,233	
Taxes on products			13	360,688	357,185	396,880	382,175	443,222	482,792	520,185	540,044	562,417
Subsidies on products			14	25,817	48,792	46,578	48,562	39,727	32,152	36,621	21,645	26,072
Taxes less subsidies on products			15=13-14	334,872	308,393	350,302	333,613	403,495	450,640	483,564	518,399	536,345
Gross Domestic Product		Total	16=1+15	3,059,657	3,209,692	3,410,663	3,629,166	3,829,559	4,153,348	4,285,837	4,515,598	4,787,523
Rate of growth (%) ¹					4.9%	6.3%	6.4%	5.5%	8.5%	3.2%	5.4%	6.0%

Note: Totals may not add up due to rounding.

¹ Rate of growth (%); year-on-year

...Table 1a. GDP identity from the production (output) side at market prices by period...

€ 000												
	NACE section	Computational notes	2004	2005	2006	2007	2008	2009	2010	2011	2012	
Gross value added	Total	1=2+3+5+...+12	4,289,121	4,481,539	4,698,440	5,052,126	5,461,786	5,477,892	6,007,037	6,042,910	6,477,590	
Gross value added by industry	Agriculture, forestry and fishing	A	2	92,791	94,942	101,008	105,975	65,790	90,056	86,262	68,686	77,739
	Mining and quarrying; manufacturing; electricity, gas, steam and air conditioning supply; water supply; sewerage, waste management and remediation activities	B to E	3	749,319	741,696	775,161	824,921	943,580	856,682	911,533	862,722	833,048
		<i>of which : C</i>	4	662,284	669,781	672,294	719,913	838,551	704,775	765,861	777,933	805,664
	Construction	F	5	342,861	339,896	302,446	232,569	252,592	241,316	285,749	268,610	266,121
	Wholesale and retail trade; repair of motor vehicles and motorcycles; transportation and storage; accommodation and food service activities	G to I	6	1,078,999	1,061,660	1,103,552	1,195,247	1,219,481	1,176,118	1,260,203	1,299,237	1,408,768
	Information and communication	J	7	218,233	244,320	269,029	264,044	286,063	286,853	324,548	368,396	372,840
	Financial and insurance activities	K	8	214,411	305,850	362,908	415,941	386,262	462,178	530,355	507,909	621,341
	Real estate activities	L	9	290,536	286,392	301,978	320,281	342,706	375,752	402,768	393,748	410,425
	Professional, scientific and technical activities; administrative and support service activities	M to N	10	338,568	364,874	408,916	438,528	469,837	486,262	568,140	598,881	692,648
	Public administration and defence; compulsory social security; education; human health and social work activities	O to Q	11	808,120	832,696	858,126	903,669	969,718	1,031,791	1,089,110	1,150,736	1,218,687
Arts, entertainment and recreation, repair of household goods and other services	R to U	12	155,282	209,214	215,315	350,951	525,758	470,884	548,370	523,985	575,972	
Taxes on products		13	635,616	713,176	753,229	800,199	829,500	798,178	827,687	899,818	919,551	
Subsidies on products		14	29,188	35,462	48,667	62,048	85,265	16,425	18,921	18,131	32,681	
Taxes less subsidies on products		15=13-14	606,428	677,715	704,562	738,150	744,235	781,753	808,766	881,687	886,870	
Gross Domestic Product	Total	16=1+15	4,895,549	5,159,254	5,403,002	5,790,276	6,206,021	6,259,645	6,815,804	6,924,598	7,364,460	
Rate of growth (%) ¹			2.3%	5.4%	4.7%	7.2%	7.2%	0.9%	8.9%	1.6%	6.4%	

Note: Totals may not add up due to rounding.

¹ Rate of growth (%); year-on-year

... Table 1a. GDP identity from the production (output) side at market prices by period...

€ 000

		NACE section	Computational notes	2013	2014	2015	2016	2017	2018	2019
Gross value added		Total	1=2+3+5+...+12	7,019,237	7,716,193	8,888,820	9,352,969	10,330,050	11,021,909	11,893,339
Gross value added by industry	Agriculture, forestry and fishing	A	2	84,993	87,875	92,258	101,029	79,736	90,075	95,270
	Mining and quarrying; manufacturing; electricity, gas, steam and air conditioning supply; water supply; sewerage, waste management and remediation activities	B to E	3	855,486	853,207	908,457	967,829	1,014,203	1,126,195	1,183,279
		<i>of which: C</i>	4	749,635	745,875	744,575	756,673	836,333	925,625	966,323
	Construction	F	5	303,370	283,460	320,498	333,194	393,012	436,778	485,858
	Wholesale and retail trade; repair of motor vehicles and motorcycles; transportation and storage; accommodation and food service activities	G to I	6	1,582,083	1,666,257	1,928,481	1,938,710	2,131,283	2,267,377	2,420,913
	Information and communication	J	7	373,013	474,632	557,461	638,304	706,172	751,657	804,997
	Financial and insurance activities	K	8	659,683	647,382	740,729	785,339	823,179	887,135	946,139
	Real estate activities	L	9	428,703	442,710	512,587	582,165	632,386	693,091	755,638
	Professional, scientific and technical activities; administrative and support service activities	M to N	10	763,888	877,263	1,114,836	1,338,931	1,661,740	1,892,706	2,134,145
	Public administration and defence; compulsory social security; education; human health and social work activities	O to Q	11	1,294,449	1,409,287	1,513,736	1,614,516	1,738,437	1,884,641	2,050,188
Arts, entertainment and recreation, repair of household goods and other services	R to U	12	673,570	974,120	1,199,777	1,052,951	1,149,903	992,253	1,016,910	
Taxes on products			13	959,166	1,071,407	1,141,410	1,222,715	1,365,728	1,538,580	1,568,966
Subsidies on products			14	34,058	36,498	33,520	37,314	58,086	69,519	72,259
Taxes less subsidies on products			15=13-14	925,108	1,034,909	1,107,890	1,185,401	1,307,641	1,469,061	1,496,706
Gross Domestic Product		Total	16=1+15	7,944,346	8,751,102	9,996,710	10,538,370	11,637,692	12,490,970	13,390,045
Rate of growth (%) ¹				7.9%	10.2%	14.2%	5.4%	10.4%	7.3%	7.2%

Note: Totals may not add up due to rounding.

¹ Rate of growth (%); year-on-year

... Table 1a. GDP identity from the production (output) side at market prices by period

€ 000

	NACE section	Computational notes	2017				2018				2019				2020		
			Q1	Q2	Q3	Q4	Q1	Q2	Q3	Q4	Q1	Q2	Q3	Q4	Q1	Q2	
Gross value added	Total	1=2+3+5+...+12	2,428,314	2,615,160	2,694,495	2,592,082	2,552,176	2,775,452	2,908,911	2,785,369	2,776,961	2,959,758	3,130,611	3,026,008	2,888,143	2,551,648	
Gross value added by industry	Agriculture, forestry and fishing	A	2	18,265	21,524	21,367	18,581	17,197	22,539	27,079	23,258	19,580	24,210	25,962	25,518	19,757	19,210
	Mining and quarrying; manufacturing; electricity, gas, steam and air conditioning supply; water supply; sewerage, waste management and remediation activities	B to E	3	237,165	260,440	252,243	264,355	250,764	292,234	286,419	296,777	261,192	299,556	298,822	323,708	277,036	262,671
		of which: C	4	197,155	219,962	203,477	215,739	204,939	244,297	226,970	249,419	213,177	245,748	235,022	272,376	229,329	221,268
	Construction	F	5	96,672	98,848	99,062	98,429	107,013	109,097	108,743	111,925	113,088	119,937	123,247	129,586	115,139	111,549
	Wholesale and retail trade; repair of motor vehicles and motorcycles; transportation and storage; accommodation and food service activities	G to I	6	447,685	557,215	617,801	508,582	473,922	594,809	660,238	538,408	508,812	611,512	709,905	590,685	489,022	297,025
	Information and communication	J	7	165,872	176,421	178,698	185,180	179,859	186,354	195,871	189,573	193,055	201,595	203,946	206,400	209,821	214,479
	Financial and insurance activities	K	8	205,875	205,760	201,428	210,116	207,035	219,275	225,446	235,378	239,441	237,186	239,126	230,386	249,291	234,281
	Real estate activities	L	9	157,959	155,911	158,376	160,139	167,967	171,420	173,754	179,950	181,267	184,612	190,338	199,420	197,425	189,371
	Professional, scientific and technical activities; administrative and support service activities	M to N	10	387,406	413,247	436,580	424,507	433,120	463,881	507,780	487,925	498,569	525,295	564,140	546,141	506,407	470,236
	Public administration and defence; compulsory social security; education; human health and social work activities	O to Q	11	426,497	437,101	440,923	433,915	470,550	469,096	474,542	470,454	514,515	502,111	521,903	511,659	536,231	506,570
	Arts, entertainment and recreation, repair of household goods and other services	R to U	12	284,918	288,692	288,017	288,276	244,748	246,747	249,038	251,721	247,440	253,743	253,221	262,506	288,015	246,256
	Taxes on products		13	324,298	300,693	376,107	364,629	340,831	349,223	436,182	412,343	367,309	380,035	413,193	408,429	358,735	282,049
Subsidies on products		14	9,306	14,865	13,516	20,399	17,758	17,835	18,293	15,633	15,387	20,228	19,666	16,978	18,950	8,456	
Taxes less subsidies on products		15=13-14	314,992	285,828	362,591	344,230	323,073	331,388	417,889	396,711	351,921	359,806	393,527	391,451	339,785	273,593	
Gross Domestic Product	Total	16=1+15	2,743,306	2,900,988	3,057,086	2,936,312	2,875,249	3,106,840	3,326,800	3,182,080	3,128,882	3,319,564	3,524,139	3,417,460	3,227,929	2,825,241	
Rate of growth (%) ¹			11.0%	10.8%	10.3%	9.7%	4.8%	7.1%	8.8%	8.4%	8.8%	6.8%	5.9%	7.4%	3.2%	-14.9%	

Note: Totals may not add up due to rounding.

¹ Rate of growth (%); year-on-year

Table 1b. GDP identity from the production (output) side in chain-linked volumes by period (reference year 2015)^{1,2} ...

€ 000

		NACE section	2000	2001	2002	2003	2004	2005	2006	2007	2008	2009
Gross value added		Total	5,277,237	5,172,153	5,334,820	5,593,428	5,526,014	5,662,891	5,814,468	6,077,632	6,364,453	6,293,853
Gross value added by industry	Agriculture, forestry and fishing	A	77,632	91,930	92,106	93,950	95,300	123,898	128,046	118,411	69,694	98,133
	Mining and quarrying; manufacturing; electricity, gas, steam and air conditioning supply; water supply; sewerage, waste management and remediation activities	B to E	960,306	817,881	847,504	888,555	793,159	774,678	777,942	841,699	952,063	842,583
		<i>of which: C</i>	791,684	654,676	679,477	730,347	652,473	654,023	647,908	700,217	816,473	689,238
	Construction	F	321,658	333,913	407,238	446,743	436,279	422,512	367,261	270,665	285,622	267,457
	Wholesale and retail trade; repair of motor vehicles and motorcycles; transportation and storage; accommodation and food service activities	G to I	1,335,758	1,316,805	1,310,721	1,318,146	1,284,546	1,240,135	1,260,062	1,346,347	1,321,262	1,262,958
	Information and communication	J	163,926	179,064	183,286	197,533	196,852	205,625	224,764	220,039	234,368	236,373
	Financial and insurance activities	K	265,219	252,023	226,792	248,703	319,471	402,758	480,527	542,415	484,455	560,873
	Real estate activities	L	290,956	292,271	307,647	337,496	359,896	349,078	361,436	373,470	389,277	411,095
	Professional, scientific and technical activities; administrative and support service activities	M to N	357,076	375,376	387,631	426,543	434,634	456,902	499,255	519,843	540,458	541,838
	Public administration and defence; compulsory social security; education; human health and social work activities	O to Q	1,044,906	1,065,881	1,093,738	1,124,286	1,155,277	1,178,391	1,189,625	1,216,864	1,257,599	1,285,200
Arts, entertainment and recreation, repair of household goods and other services	R to U	244,465	284,033	315,519	350,657	317,589	427,160	442,155	592,173	844,145	821,479	
Taxes on products			769,014	808,820	791,874	777,858	855,202	934,106	940,565	1,000,791	988,748	976,875
Subsidies on products			9,642	9,657	9,325	9,428	8,694	8,467	7,365	7,805	8,715	8,697
Taxes less subsidies on products			777,241	820,259	803,906	788,713	873,933	959,544	973,063	1,035,662	1,011,996	998,695
Gross Domestic Product		Total	6,043,574	5,972,580	6,125,792	6,375,361	6,384,304	6,600,323	6,766,000	7,089,057	7,360,310	7,276,853
Rate of growth (%)³				-1.2%	2.6%	4.1%	0.1%	3.4%	2.5%	4.8%	3.8%	-1.1%

¹ Users should note that chain-linking gives rise to components of GDP not adding up to the aggregate volume GDP series. This non-additivity, similar to that in other countries' national accounts, is due to mathematical reasons and reflects the fact that chain-linked volumes are calculated by separately extrapolating both totals and their sub-components.

² Chain-linking for variables with a potentially changing sign is aggravated and the results could prove to be erratic. For this reason, variables that are regularly susceptible to this are not required by Eurostat, at least not in absolute terms.

³ Rate of growth (%); year-on-year

... Table 1b. GDP identity from the production (output) side in chain-linked volumes by period (reference year 2015)^{1,2...}

€ 000

		NACE section	2010	2011	2012	2013	2014	2015	2016	2017	2018	2019
Gross value added		Total	6,669,036	6,627,263	6,953,953	7,411,202	8,013,040	8,888,820	9,247,745	10,009,864	10,474,702	11,052,310
Gross value added by industry	Agriculture, forestry and fishing	A	96,649	74,669	77,844	83,706	90,629	92,258	108,101	84,129	93,380	88,657
	Mining and quarrying; manufacturing; electricity, gas, steam and air conditioning supply; water supply; sewerage, waste management and remediation activities	B to E	902,192	829,551	812,577	848,475	846,754	908,457	968,065	1,006,337	1,095,396	1,133,476
		<i>of which : C</i>	770,147	757,514	796,739	756,324	752,588	744,575	751,513	822,802	889,035	911,367
	Construction	F	315,121	289,465	281,767	314,543	287,412	320,498	327,336	380,969	417,623	455,701
	Wholesale and retail trade; repair of motor vehicles and motorcycles; transportation and storage; accommodation and food service activities	G to I	1,311,305	1,350,578	1,425,142	1,592,383	1,680,896	1,928,481	1,933,368	2,086,951	2,214,808	2,343,881
	Information and communication	J	273,456	332,504	367,012	375,529	486,793	557,461	656,739	743,865	810,815	880,460
	Financial and insurance activities	K	626,408	575,738	665,667	685,771	667,816	740,729	772,376	791,543	810,990	839,694
	Real estate activities	L	431,029	414,755	427,867	446,679	458,975	512,587	552,137	591,203	632,270	657,024
	Professional, scientific and technical activities; administrative and support service activities	M to N	626,383	650,959	736,525	791,943	896,822	1,114,836	1,321,179	1,605,559	1,792,792	1,955,002
	Public administration and defence; compulsory social security; education; human health and social work activities	O to Q	1,299,859	1,330,993	1,356,483	1,391,323	1,457,541	1,513,736	1,583,136	1,651,015	1,713,966	1,800,436
Arts, entertainment and recreation, repair of household goods and other services	R to U	776,825	749,280	773,956	852,047	1,149,469	1,199,777	1,025,307	1,067,712	905,238	916,001	
Taxes on products			1,008,085	1,090,064	1,076,846	1,053,177	1,115,792	1,141,410	1,178,046	1,260,321	1,379,795	1,393,025
Subsidies on products			11,361	10,069	11,091	11,983	19,231	33,520	40,088	52,474	58,349	65,065
Taxes less subsidies on products			1,024,844	1,112,862	1,096,769	1,068,519	1,110,593	1,107,890	1,137,958	1,208,868	1,322,542	1,328,620
Gross Domestic Product		Total	7,680,256	7,716,126	8,033,854	8,473,575	9,120,409	9,996,710	10,385,703	11,218,123	11,799,065	12,379,558
Rate of growth (%) ³			5.5%	0.5%	4.1%	5.5%	7.6%	9.6%	3.9%	8.0%	5.2%	4.9%

¹ Users should note that chain-linking gives rise to components of GDP not adding up to the aggregate volume GDP series. This non-additivity, similar to that in other countries' national accounts, is due to mathematical reasons and reflects the fact that chain-linked volumes are calculated by separately extrapolating both totals and their sub-components

² Chain-linking for variables with a potentially changing sign is aggravated and the results could prove to be erratic. For this reason, variables that are regularly susceptible to this are not required by Eurostat, at least not in absolute terms

³ Rate of growth (%); year-on-year

... Table 1b. GDP identity from the production (output) side in chain-linked volumes by period (reference year 2015)^{1,2}

€ 000

		NACE section	2017				2018				2019				2020	
			Q1	Q2	Q3	Q4	Q1	Q2	Q3	Q4	Q1	Q2	Q3	Q4	Q1	Q2
Gross value added		Total	2,383,204	2,527,770	2,591,440	2,507,449	2,445,465	2,648,642	2,741,333	2,639,262	2,605,279	2,765,419	2,877,341	2,804,271	2,639,386	2,347,823
Gross value added by industry	Agriculture, forestry and fishing	A	18,562	22,115	24,180	19,272	18,291	21,550	31,744	21,796	18,028	21,079	27,260	22,290	17,230	18,217
	Mining and quarrying; manufacturing; electricity, gas, steam and air conditioning supply; water supply; sewerage, waste management and remediation activities	B to E	236,366	259,100	249,323	261,548	246,329	283,797	277,620	287,650	250,829	286,283	286,232	310,132	263,244	249,707
		of which : C	194,983	217,136	199,190	211,494	199,208	234,287	216,829	238,711	201,649	231,142	221,489	257,087	214,288	206,877
	Construction	F	94,772	96,041	95,510	94,646	102,989	104,661	104,218	105,755	106,346	112,486	115,532	121,337	106,407	102,837
	Wholesale and retail trade; repair of motor vehicles and motorcycles; transportation and storage; accommodation and food service activities	G to I	452,486	545,433	587,822	501,210	475,034	582,566	628,044	529,164	508,329	592,438	667,138	575,977	482,508	288,543
	Information and communication	J	172,957	183,690	189,319	197,899	192,126	201,078	211,354	206,257	213,928	221,717	220,794	224,021	226,283	234,311
	Financial and insurance activities	K	199,148	196,972	193,339	202,084	194,525	203,427	202,280	210,758	216,637	210,842	209,095	203,120	219,383	214,968
	Real estate activities	L	148,722	146,500	147,677	148,304	156,365	157,358	157,655	160,892	162,361	162,482	164,552	167,630	166,150	159,302
	Professional, scientific and technical activities; administrative and support service activities	M to N	375,939	400,511	423,562	405,547	412,839	441,257	483,105	455,592	459,887	482,725	517,984	494,406	459,784	427,999
	Public administration and defence; compulsory social security; education; human health and social work activities	O to Q	414,444	405,318	421,939	409,313	422,321	427,967	431,854	431,823	444,567	448,677	455,109	452,082	437,908	421,732
Arts, entertainment and recreation, repair of household goods and other services	R to U	268,179	272,264	259,550	267,719	225,458	228,345	219,011	232,424	225,213	231,546	220,965	238,278	260,639	226,495	
Taxes on products			294,532	284,075	352,258	329,456	305,749	312,410	393,583	368,053	330,890	333,554	373,639	354,942	339,476	252,075
Subsidies on products			13,101	13,133	13,130	13,111	14,578	14,589	14,575	14,608	16,254	16,297	16,268	16,246	19,635	16,880
Taxes less subsidies on products			281,759	271,311	339,250	316,547	291,375	298,037	379,369	353,760	314,735	317,363	357,633	338,889	320,056	235,387
Gross Domestic Product		Total	2,664,657	2,798,025	2,931,232	2,824,210	2,736,522	2,945,586	3,122,599	2,994,358	2,919,767	3,081,696	3,235,196	3,142,899	2,959,229	2,580,974
Rate of growth (%)³			8.6%	8.4%	8.0%	7.1%	2.7%	5.3%	6.5%	6.0%	6.7%	4.6%	3.6%	5.0%	1.4%	-16.2%

¹ Users should note that chain-linking gives rise to components of GDP not adding up to the aggregate volume GDP series. This non-additivity, similar to that in other countries' national accounts, is due to mathematical reasons and reflects the fact that chain-linked volumes are calculated by separately extrapolating both totals and their sub-components.

² Chain-linking for variables with a potentially changing sign is aggravated and the results could prove to be erratic. For this reason, variables that are regularly susceptible to this are not required by Eurostat, at least not in absolute terms.

³ Rate of growth (%); year-on-year

Table 2a. GDP identity from the expenditure side at market prices by period...

		ESA code	Computational notes	1995	1996	1997	1998	1999	2000	2001	2002	
Gross Domestic Product		B1GQ	1=2+20+29-30	3,059,657	3,209,692	3,410,663	3,629,166	3,829,559	4,153,348	4,285,837	4,515,598	
Final consumption expenditure	Total Final consumption expenditure	P3	2=3+18+19	2,433,377	2,665,521	2,776,515	2,930,230	3,111,185	3,373,188	3,577,258	3,600,877	
	of households (National concept)	P31_S14	3=4+...15-16+17	1,830,176	1,991,046	2,089,119	2,204,180	2,365,412	2,570,306	2,694,266	2,670,920	
	Domestic concept by COICOP	Food and Non-Alcoholic Beverages		4	375,542	398,130	418,786	419,166	441,977	451,588	481,958	506,722
		Alcoholic Beverages, Tobacco		5	98,801	103,793	122,490	126,064	128,658	141,611	152,178	150,321
		Clothing and Footwear		6	155,490	178,996	191,586	190,435	192,805	195,548	193,808	171,063
		Housing, Water, Electricity, Gas and other fuels		7	273,821	285,000	298,811	310,775	319,284	337,370	349,996	361,825
		Furnishings, Household Equipment and Routine Household Maintenance		8	179,545	192,901	212,424	215,341	228,583	243,609	263,567	270,857
		Health		9	53,911	60,255	61,012	70,222	77,900	85,936	86,886	95,507
		Transport		10	352,854	373,240	367,058	382,832	437,087	462,318	446,437	403,781
		Communication		11	37,761	41,883	46,967	49,562	60,262	87,483	93,622	99,572
		Recreation and Culture		12	230,434	254,195	277,786	291,806	318,376	333,539	350,344	327,014
		Education		13	18,924	19,575	22,324	27,500	30,509	37,273	41,910	45,790
		Restaurants and Hotels		14	388,251	399,460	426,100	466,570	495,936	512,178	530,274	538,975
		Miscellaneous Goods and Services		15	135,083	141,359	155,437	175,415	189,633	199,774	219,657	239,430
		of non-resident households on the economic territory		16	542,287	533,119	581,961	593,100	632,152	601,961	589,241	613,960
of resident households in the rest of the world			17	72,045	75,377	70,300	71,592	76,554	84,041	72,870	74,023	
of Non-Profit Institutions Serving Households	P31_S15	18	52,100	58,468	59,227	61,812	62,024	63,247	65,981	73,689		
of general government	P3_S13	19	551,101	616,007	628,169	664,238	683,749	739,636	817,011	856,268		
Gross capital formation	Total gross capital formation	P5	20=26+27+28	786,703	858,125	837,261	935,365	902,294	1,117,722	888,107	783,840	
	Gross fixed capital formation by asset	Dwellings	P51	21	157,086	186,206	179,140	173,534	159,851	174,733	215,078	245,664
		Other buildings and structures	P51	22	227,070	276,801	257,804	271,270	181,734	271,342	312,791	314,183
		Machinery and equipment	P51	23	305,503	294,862	296,612	364,290	434,988	446,863	298,043	142,549
		Cultivated biological resources	P51	24	5,642	4,874	4,765	4,405	4,421	5,075	3,604	3,541
		Intellectual property products	P51	25	36,454	40,186	42,256	59,313	66,685	44,929	46,631	48,741
	Total gross fixed capital formation	P51	26=21+...+25	731,756	802,929	780,577	872,812	847,679	942,943	876,148	754,678	
	Changes in inventories	P52	27	45,450	45,698	47,186	51,619	45,225	163,871	-21,138	8,542	
Acquisitions less disposals of valuables	P53	28	9,497	9,497	9,497	10,933	9,389	10,908	33,098	20,620		
Exports of goods and services	P6	29	3,875,681	3,662,203	3,757,390	3,971,166	4,277,009	4,994,364	4,656,346	5,120,792		
Imports of goods and services	P7	30	4,036,103	3,976,156	3,960,503	4,207,595	4,460,929	5,331,927	4,835,874	4,989,910		

Note: Totals may not add up due to rounding.

... Table 2a. GDP identity from the expenditure side at market prices by period...

			€ 000										
			ESA code	Computational notes	2003	2004	2005	2006	2007	2008	2009	2010	
Gross Domestic Product			B1GQ	1=2+20+29-30	4,787,523	4,895,549	5,159,254	5,403,002	5,790,276	6,206,021	6,259,645	6,815,804	
Final consumption expenditure	Total Final consumption expenditure		P3	2=3+18+19	3,830,523	4,032,074	4,269,669	4,508,000	4,647,879	4,946,157	5,062,438	5,293,594	
	of households (National concept)		P31_S14	3=4+..15-16+17	2,845,031	3,014,496	3,234,688	3,404,132	3,503,016	3,620,918	3,732,457	3,888,572	
	Domestic concept by COICOP	Food and Non-Alcoholic Beverages			4	532,102	545,148	561,412	594,379	635,859	672,029	667,776	686,550
		Alcoholic Beverages, Tobacco			5	153,630	158,059	167,986	170,130	156,229	170,947	167,097	170,630
		Clothing and Footwear			6	201,154	207,949	213,272	205,406	206,404	211,719	229,059	247,214
		Housing, Water, Electricity, Gas and other fuels			7	392,072	385,936	407,078	431,019	448,964	500,700	575,754	615,213
		Furnishings, Household Equipment and Routine Household Maintenance			8	289,766	292,492	301,418	297,362	308,850	315,889	310,702	307,333
		Health			9	103,056	115,365	127,729	134,207	142,864	155,361	161,324	172,931
		Transport			10	397,691	435,255	486,203	491,797	534,020	555,696	546,578	582,195
		Communication			11	106,979	113,639	120,441	126,007	132,424	139,187	141,788	145,448
		Recreation and Culture			12	330,005	339,664	333,907	352,120	352,329	356,399	361,797	399,295
		Education			13	50,472	50,589	54,630	57,288	58,502	61,425	71,429	80,248
		Restaurants and Hotels			14	574,937	563,424	587,474	618,534	654,275	602,244	663,038	745,452
		Miscellaneous Goods and Services			15	262,462	319,157	392,747	394,536	436,177	440,353	308,065	360,053
		of non-resident households on the economic territory			16	633,965	620,922	611,012	607,162	702,245	729,230	639,820	813,854
of resident households in the rest of the world			17	84,670	108,740	91,403	138,508	138,366	168,200	167,870	189,864		
of Non-Profit Institutions Serving Households		P31_S15	18	77,095	79,531	83,812	86,951	91,238	94,931	98,122	105,700		
of general government		P3_S13	19	908,396	938,047	951,169	1,016,917	1,053,624	1,230,308	1,231,859	1,299,321		
Gross capital formation	Total gross capital formation		P5	20=26+27+28	1,093,408	1,176,428	1,428,374	1,275,008	1,364,074	1,373,307	1,253,925	1,518,339	
	Gross fixed capital formation by asset	Dwellings		P51	21	334,370	350,304	368,384	400,312	450,794	370,441	283,539	239,424
		Other buildings and structures		P51	22	288,879	291,419	336,559	304,746	300,681	325,435	323,737	435,747
		Machinery and equipment		P51	23	328,328	306,580	394,641	434,591	456,644	401,005	381,914	565,659
		Cultivated biological resources		P51	24	4,673	5,257	3,963	3,171	3,893	2,401	2,545	1,173
		Intellectual property products		P51	25	54,910	75,960	74,654	71,676	116,780	144,210	152,796	188,809
	Total gross fixed capital formation		P51	26=21+..+25	1,011,160	1,029,519	1,178,203	1,214,496	1,328,791	1,243,492	1,144,531	1,430,812	
Changes in inventories		P52	27	66,916	135,575	236,361	53,580	24,198	124,507	108,148	100,623		
Acquisitions less disposals of valuables		P53	28	15,333	11,334	13,811	6,932	11,085	5,309	1,247	-13,096		
Exports of goods and services			P6	29	5,147,651	5,048,651	5,343,931	6,667,396	7,483,603	9,215,634	9,203,055	10,288,233	
Imports of goods and services			P7	30	5,284,059	5,361,604	5,882,720	7,047,402	7,705,280	9,329,077	9,259,773	10,284,363	

Note: Totals may not add up due to rounding.

... Table 2a. GDP identity from the expenditure side at market prices by period...

€ 000

	ESA code	Computational notes	2011	2012	2013	2014	2015	2016	2017	2018	2019		
Gross Domestic Product	B1GQ	1=2+20+29-30	6,924,598	7,364,460	7,944,346	8,751,102	9,996,710	10,538,370	11,637,692	12,490,970	13,390,045		
Total Final consumption expenditure	P3	2=3+18+19	5,598,470	5,838,625	6,054,344	6,331,611	6,607,200	6,775,952	7,065,033	7,822,630	8,532,771		
of households (National concept)	P31_S14	3=4+...15-16+17	4,131,064	4,265,078	4,445,360	4,588,834	4,770,552	4,943,578	5,165,448	5,652,736	6,066,729		
Final consumption expenditure	Domestic concept by COICOP	Food and Non-Alcoholic Beverages	4	730,336	747,505	781,049	811,541	825,854	821,028	851,393	888,186	914,965	
		Alcoholic Beverages, Tobacco	5	178,917	189,022	188,023	210,599	219,584	228,528	238,546	259,809	270,731	
		Clothing and Footwear	6	265,439	283,677	307,195	327,072	338,079	321,989	373,082	388,885	426,025	
		Housing, Water, Electricity, Gas and other fuels	7	626,412	657,683	662,149	659,977	689,422	760,590	834,332	848,774	906,794	
		Furnishings, Household Equipment and Routine Household Maintenance	8	300,828	295,473	283,944	282,983	288,895	285,096	290,913	313,175	335,085	
		Health	9	183,382	193,877	201,840	218,953	240,160	245,333	271,242	300,105	321,503	
		Transport	10	646,747	651,073	634,283	660,438	669,557	717,888	768,124	822,608	860,947	
		Communication	11	149,692	152,982	158,905	161,732	165,679	180,520	189,518	198,567	208,860	
		Recreation and Culture	12	431,946	452,946	477,732	500,736	514,940	526,909	564,128	608,534	650,907	
		Education	13	88,894	97,895	107,539	121,061	130,336	133,549	138,936	141,541	149,247	
		Restaurants and Hotels	14	825,675	877,369	973,233	1,044,943	1,139,049	1,186,414	1,301,689	1,424,422	1,503,192	
		Miscellaneous Goods and Services	15	416,331	439,439	489,399	487,098	524,237	530,150	521,102	650,022	803,221	
		of non-resident households on the economic territory		16	910,980	988,684	1,057,186	1,145,978	1,248,745	1,306,490	1,528,432	1,573,784	1,698,118
		of resident households in the rest of the world		17	197,445	214,820	237,256	247,680	273,505	312,075	350,875	381,890	413,370
		of Non-Profit Institutions Serving Households	P31_S15	18	110,086	112,960	118,436	122,803	128,405	136,605	140,868	154,023	166,340
of general government	P3_S13	19	1,357,321	1,460,586	1,490,548	1,619,974	1,708,243	1,695,769	1,758,718	2,015,871	2,299,702		
Total gross capital formation	P5	20=26+27+28	1,224,387	1,263,404	1,284,941	1,370,794	2,413,216	2,585,750	2,614,169	2,720,196	2,991,768		
Gross capital formation	Gross fixed capital formation by asset	Dwellings	P51	21	256,453	204,670	207,702	214,776	291,255	380,568	524,447	632,987	658,253
		Other buildings and structures	P51	22	386,516	438,280	433,005	472,500	793,674	555,176	786,273	807,645	978,197
		Machinery and equipment	P51	23	432,855	441,678	450,272	494,927	1,037,388	1,208,590	795,467	740,137	771,084
		Cultivated biological resources	P51	24	739	2,975	2,727	1,999	2,120	2,251	2,232	3,114	2,331
		Intellectual property products	P51	25	181,094	208,984	219,008	273,716	294,731	382,404	423,205	450,021	488,577
		Total gross fixed capital formation	P51	26=21+...+25	1,257,656	1,296,587	1,312,714	1,457,918	2,419,168	2,528,989	2,531,624	2,633,903	2,898,442
		Changes in inventories	P52	27	-12,278	-37,438	-49,114	-102,666	-25,468	41,742	66,858	60,715	66,885
		Acquisitions less disposals of valuables	P53	28	-20,991	4,255	21,341	15,542	19,516	15,020	15,686	25,578	26,441
Exports of goods and services	P6	29	11,119,958	12,012,905	12,390,989	13,110,246	15,456,728	15,916,525	17,546,729	17,833,877	19,258,067		
Imports of goods and services	P7	30	11,018,217	11,750,473	11,785,929	12,061,549	14,480,434	14,739,857	15,588,240	15,885,733	17,392,561		

Note: Totals may not add up due to rounding.

... Table 2a. GDP identity from the expenditure side at market prices by period

€ 000

		ESA code	Computational notes	2017				2018				2019				2020		
				Q1	Q2	Q3	Q4	Q1	Q2	Q3	Q4	Q1	Q2	Q3	Q4	Q1	Q2	
Gross Domestic Product		B1GQ	1=2+20+29-30	2,743,306	2,900,988	3,057,086	2,936,312	2,875,249	3,106,840	3,326,800	3,182,080	3,128,882	3,319,564	3,524,139	3,417,460	3,227,929	2,825,241	
Total Final consumption expenditure		P3	2=3+18+19	1,722,927	1,748,878	1,837,836	1,755,392	1,820,565	1,919,862	2,048,483	2,033,719	2,068,051	2,073,066	2,203,841	2,187,814	2,158,125	1,861,729	
of households (National concept)		P31_S14	3=4+...15-16+17	1,253,297	1,268,103	1,349,896	1,294,152	1,326,432	1,371,520	1,518,073	1,436,712	1,447,227	1,471,433	1,607,302	1,540,766	1,450,973	1,161,782	
Final consumption expenditure	Domestic concept by COICOP	Food and Non-Alcoholic Beverages	4	198,913	208,390	229,326	214,764	199,897	232,629	237,205	218,454	209,753	229,516	246,348	229,349	235,706	209,383	
		Alcoholic Beverages, Tobacco	5	50,303	61,579	70,257	56,408	53,488	65,391	76,245	64,685	58,816	69,220	77,212	65,482	57,299	47,637	
		Clothing and Footwear	6	87,887	97,152	93,930	94,114	102,133	94,606	91,503	100,644	103,243	101,219	99,669	121,894	90,381	49,623	
		Housing, Water, Electricity, Gas and other fuels	7	204,460	201,658	215,047	213,168	211,021	211,999	216,438	209,317	217,176	219,539	236,949	233,131	239,887	238,898	
		Furnishings, Household Equipment and Routine Household Maintenance	8	71,394	75,078	66,123	78,319	71,646	79,850	77,023	84,655	83,058	86,367	79,224	86,436	78,346	76,104	
		Health	9	68,850	71,521	66,757	64,113	74,101	73,593	76,405	76,006	85,989	73,351	77,089	85,074	86,408	60,267	
		Transport	10	164,340	190,365	217,315	196,102	179,032	201,023	226,035	216,518	183,929	218,331	242,185	216,502	177,750	128,406	
		Communication	11	43,362	46,272	49,566	50,318	47,943	48,416	50,867	51,341	48,289	50,723	53,565	56,284	51,135	46,057	
		Recreation and Culture	12	112,683	136,344	173,146	141,954	121,061	144,552	196,785	146,135	129,909	159,819	199,439	161,740	116,463	66,648	
		Education	13	31,194	36,026	46,455	25,260	31,483	36,965	46,579	26,515	33,278	38,523	48,875	28,570	35,325	16,773	
		Restaurants and Hotels	14	195,103	350,055	496,045	260,487	218,202	389,476	552,119	264,625	219,848	410,104	585,096	288,144	180,709	52,698	
		Miscellaneous Goods and Services	15	142,624	133,349	122,676	122,452	145,779	147,981	170,232	186,030	202,839	201,770	192,985	205,626	207,327	174,228	
		of non-resident households on the economic territory		16	176,525	411,362	625,041	315,503	196,838	432,475	635,626	308,845	201,481	475,572	672,959	348,105	158,377	4,947
		of resident households in the rest of the world		17	58,709	71,677	128,293	92,195	67,482	77,513	136,262	100,632	72,582	88,522	141,625	110,641	52,612	7
		of Non-Profit Institutions Serving Households	P31_S15	18	35,543	34,863	35,745	34,717	37,926	38,321	38,962	38,815	47,724	35,104	48,373	35,139	52,294	53,061
of general government	P3_S13	19	434,087	445,912	452,196	426,523	456,208	510,021	491,449	558,193	573,100	566,529	548,165	611,908	654,858	646,885		
Total gross capital formation	P5	20=26+27+28	670,461	586,379	631,814	725,515	616,870	668,581	680,558	754,188	797,940	711,507	705,835	776,486	700,770	699,710		
Gross capital formation	Gross fixed capital formation by asset	Dwellings	P51	21	124,847	132,311	129,680	137,610	139,262	151,966	164,769	176,990	164,707	160,179	163,915	169,452	153,534	127,312
		Other buildings and structures	P51	22	246,946	169,960	169,942	199,425	176,658	186,378	201,307	243,301	214,576	250,481	231,042	282,098	243,492	224,998
		Machinery and equipment	P51	23	176,529	156,701	202,154	260,083	175,090	196,373	177,821	190,853	277,638	156,718	164,421	172,308	148,923	134,007
		Cultivated biological resources	P51	24	498	697	580	457	808	854	763	689	676	658	467	529	387	744
		Intellectual property products	P51	25	102,404	106,009	107,717	107,076	106,658	111,595	116,329	115,439	120,135	120,717	123,145	124,580	133,217	132,172
		Total gross fixed capital formation	P51	26=21+...+25	651,223	565,678	610,072	704,651	598,477	647,166	660,989	727,271	777,732	688,753	682,989	748,967	679,553	619,233
		Changes in inventories	P52	27	15,629	16,811	17,549	16,869	13,955	15,273	16,070	15,417	15,556	16,609	17,604	17,116	16,651	75,118
Acquisitions less disposals of valuables	P53	28	3,608	3,890	4,193	3,994	4,438	6,142	3,498	11,500	4,652	6,145	5,242	10,402	4,565	5,360		
Exports of goods and services	P6	29	4,128,290	4,384,097	4,546,714	4,487,628	4,204,971	4,487,459	4,625,428	4,516,019	4,526,832	4,777,789	5,092,264	4,861,183	4,719,910	4,209,033		
Imports of goods and services	P7	30	3,778,371	3,818,367	3,959,278	4,032,223	3,767,156	3,969,062	4,027,669	4,121,846	4,263,941	4,242,797	4,477,801	4,408,022	4,350,877	3,945,231		

Note: Totals may not add up due to rounding.

Table 2b. GDP identity from the expenditure side in chain-linked volumes by period (reference year 2015)^{1, 2} ...

€ 000

	ESA code	2000	2001	2002	2003	2004	2005	2006	2007	2008	2009		
Gross Domestic Product	B1GQ	6,043,574	5,972,580	6,125,792	6,375,361	6,384,304	6,600,323	6,766,000	7,089,057	7,360,310	7,276,853		
Final consumption expenditure	Total Final consumption expenditure	P3	4,785,708	4,880,844	4,826,967	5,059,499	5,168,880	5,325,418	5,475,628	5,561,462	5,706,182	5,703,644	
	of households (National concept)	P31_S14	3,492,113	3,574,568	3,484,542	3,678,071	3,782,724	3,948,253	4,050,786	4,116,444	4,098,378	4,145,265	
	Domestic concept by COICOP	Food and Non-Alcoholic Beverages		715,717	731,732	753,788	777,608	797,827	806,999	835,693	860,354	847,644	793,628
		Alcoholic Beverages, Tobacco		262,833	270,446	248,939	251,519	227,089	237,605	239,861	219,300	235,912	224,531
		Clothing and Footwear		173,450	174,579	155,657	195,651	208,348	214,869	210,635	211,068	207,020	225,889
		Housing, Water, Electricity, Gas and other fuels		484,731	494,606	503,682	542,267	528,340	530,979	527,255	545,620	569,026	616,074
		Furnishings, Household Equipment and Routine Household Maintenance		293,179	316,625	324,112	347,491	341,260	343,989	333,020	343,277	348,703	339,512
		Health		136,974	134,034	144,203	147,797	154,961	162,588	164,394	170,702	181,883	181,004
		Transport		604,378	579,795	522,282	503,355	527,024	563,000	544,667	597,630	599,857	614,102
		Communication		77,908	82,169	87,217	94,465	90,991	87,448	91,159	95,703	97,679	100,838
		Recreation and Culture		390,345	396,215	363,822	363,374	373,373	363,161	381,167	380,914	384,491	392,137
		Education		78,853	83,149	82,340	88,495	85,927	91,189	93,190	91,375	90,190	98,655
		Restaurants and Hotels		815,858	800,055	785,988	786,706	745,127	770,439	792,779	824,849	709,794	759,050
		Miscellaneous Goods and Services		285,380	307,108	324,107	346,402	394,563	473,954	466,660	512,202	508,197	349,237
	of non-resident households on the economic territory		880,685	830,010	840,521	826,736	789,701	766,029	746,363	858,555	846,357	727,372	
of resident households in the rest of the world		99,287	84,812	89,106	105,341	133,168	109,665	162,439	159,467	194,116	198,452		
of Non-Profit Institutions Serving Households ²	P31_S15	97,995	97,342	106,404	107,947	108,164	111,253	112,404	115,150	116,247	116,218		
of general government	P3_S13	1,195,496	1,206,468	1,239,289	1,274,107	1,276,502	1,260,072	1,307,183	1,324,362	1,494,620	1,441,651		
Gross capital formation	Total gross capital formation	P5	1,377,297	1,057,814	910,036	1,251,048	1,339,547	1,618,327	1,434,387	1,499,959	1,494,204	1,352,152	
	Gross fixed capital formation by asset	Dwellings	P51	255,192	298,057	324,726	432,005	450,270	467,405	501,278	553,585	447,645	337,027
		Other buildings and structures	P51	390,787	427,452	409,533	368,051	369,385	420,942	375,969	335,954	355,350	347,817
		Machinery and equipment	P51	391,520	260,143	131,764	304,203	287,375	379,417	421,012	450,010	403,985	388,226
		Cultivated biological resources	P51	6,984	4,847	4,632	6,003	6,612	4,835	3,781	4,626	2,720	2,819
		Intellectual property products	P51	64,838	65,623	66,808	73,953	99,574	95,130	89,963	145,446	172,194	179,537
	Total gross fixed capital formation	P51	1,154,281	1,036,583	870,631	1,149,985	1,168,772	1,336,105	1,369,087	1,463,986	1,358,505	1,240,685	
Exports of goods and services	P6	6,875,905	6,245,680	6,758,302	6,677,204	6,411,098	6,679,563	8,131,127	8,970,195	10,716,760	10,672,275		
Imports of goods and services	P7	7,056,768	6,261,092	6,401,796	6,686,320	6,620,894	7,130,538	8,330,397	8,991,161	10,567,937	10,453,926		

¹ Users should note that chain-linking gives rise to components of GDP not adding up to the aggregate volume GDP series. This non-additivity, similar to that in other countries' national accounts, is due to mathematical reasons and reflects the fact that chain-linked volumes are calculated by separately extrapolating both totals and their sub-components.

² Chain-linking for variables with a potentially changing sign is aggravated and the results could prove to be erratic. For this reason, variables that are regularly susceptible to this are not required by Eurostat, at least not in absolute terms.

... Table 2b. GDP identity from the expenditure side in chain-linked volumes by period (reference year 2015)^{1,2}...

€ 000

	ESA code	2010	2011	2012	2013	2014	2015	2016	2017	2018	2019	
Gross Domestic Product	B1GQ	7,680,256	7,716,126	8,033,854	8,473,575	9,120,409	9,996,710	10,385,703	11,218,123	11,799,065	12,379,558	
Total Final consumption expenditure	P3	5,799,852	5,994,738	6,081,191	6,222,184	6,452,918	6,607,200	6,696,414	6,896,210	7,543,117	8,057,529	
of households (National concept)	P31_S14	4,229,103	4,375,959	4,402,036	4,536,548	4,660,274	4,770,552	4,896,116	5,067,808	5,501,855	5,788,550	
Final consumption expenditure	Domestic concept by COICOP	Food and Non-Alcoholic Beverages	810,048	826,873	800,063	799,064	830,345	825,854	805,416	814,811	831,459	832,209
		Alcoholic Beverages, Tobacco	222,156	224,100	226,932	213,077	221,420	219,584	218,487	222,387	239,587	248,947
		Clothing and Footwear	249,539	268,822	294,315	316,791	333,736	338,079	325,917	385,916	411,772	454,166
		Housing, Water, Electricity, Gas and other fuels	622,019	617,825	643,082	646,718	664,561	689,422	733,006	800,435	803,043	830,237
		Furnishings, Household Equipment and Routine Household Maintenance	332,008	324,259	308,960	292,219	286,150	288,895	278,082	277,668	294,383	315,863
		Health	190,117	197,347	203,427	207,724	222,924	240,160	240,640	261,074	285,727	300,838
		Transport	636,599	656,754	628,496	620,024	649,276	669,557	725,308	768,853	816,958	841,624
		Communication	109,624	125,067	136,004	156,179	159,928	165,679	182,792	193,997	204,256	214,609
		Recreation and Culture	430,115	461,100	477,630	492,976	512,087	514,940	545,331	585,002	636,285	669,010
		Education	102,028	108,421	115,182	121,434	128,638	130,336	126,635	125,787	129,764	142,050
		Restaurants and Hotels	822,015	905,209	915,837	1,015,792	1,069,954	1,139,049	1,162,862	1,263,018	1,384,071	1,419,504
		Miscellaneous Goods and Services	396,524	442,535	459,291	502,928	496,778	524,237	525,128	511,216	627,568	761,966
		of non-resident households on the economic territory		895,038	991,250	1,028,823	1,096,889	1,171,130	1,248,745	1,293,293	1,499,120	1,545,634
of resident households in the rest of the world		214,483	217,266	224,509	249,019	256,089	273,505	319,805	358,987	387,490	399,988	
of Non-Profit Institutions Serving Households ²	P31_S15	119,522	122,436	121,132	124,557	126,679	128,405	133,993	134,700	143,496	150,911	
of general government	P3_S13	1,449,977	1,494,912	1,558,013	1,559,984	1,665,955	1,708,243	1,666,305	1,693,909	1,897,264	2,114,633	
Gross capital formation	P5	1,640,521	1,318,089	1,331,273	1,338,880	1,401,687	2,413,216	2,568,163	2,576,139	2,655,563	2,887,388	
Gross fixed capital formation by asset	Dwellings	279,024	295,207	224,538	218,275	217,869	291,255	377,290	517,770	615,845	628,907	
	Other buildings and structures	480,131	419,410	465,058	452,466	481,764	793,674	543,564	758,019	768,979	921,384	
	Machinery and equipment	575,795	444,320	447,948	458,390	502,349	1,037,388	1,208,311	791,336	730,773	753,619	
	Cultivated biological resources	1,275	784	3,055	2,780	2,017	2,120	2,228	2,175	2,989	2,210	
	Intellectual property products	217,833	203,692	232,263	239,095	291,718	294,731	380,819	419,186	446,099	482,583	
	Total gross fixed capital formation	P51	1,555,128	1,356,129	1,368,803	1,367,324	1,490,530	2,419,168	2,512,213	2,494,469	2,571,162	2,798,247
Exports of goods and services	P6	11,547,944	12,156,788	12,821,298	12,943,010	13,389,601	15,456,728	15,768,221	17,045,894	16,962,995	18,002,601	
Imports of goods and services	P7	11,312,975	11,742,038	12,185,032	12,033,158	12,141,275	14,480,434	14,647,095	15,298,205	15,352,511	16,559,960	

¹ Users should note that chain-linking gives rise to components of GDP not adding up to the aggregate volume GDP series. This non-additivity, similar to that in other countries' national accounts, is due to mathematical reasons and reflects the fact that chain-linked volumes are calculated by separately extrapolating both totals and their sub-components.

² Chain-linking for variables with a potentially changing sign is aggravated and the results could prove to be erratic. For this reason, variables that are regularly susceptible to this are not required by Eurostat, at least not in absolute terms.

... Table 2b. GDP identity from the expenditure side in chain-linked volumes by period (reference year 2015) ^{1, 2}

€ 000

	ESA code	2017				2018				2019				2020			
		Q1	Q2	Q3	Q4	Q1	Q2	Q3	Q4	Q1	Q2	Q3	Q4	Q1	Q2		
Gross Domestic Product	B1GQ	2,664,657	2,798,025	2,931,232	2,824,210	2,736,522	2,945,586	3,122,599	2,994,358	2,919,767	3,081,696	3,235,196	3,142,899	2,959,229	2,580,974		
Final consumption expenditure	Total final consumption expenditure	P3	1,700,404	1,698,919	1,792,209	1,704,677	1,769,024	1,850,194	1,977,031	1,946,867	1,977,983	1,959,069	2,073,705	2,046,772	2,026,116	1,728,556	
	of households (National concept)	P31_S14	1,239,454	1,240,812	1,324,733	1,262,809	1,304,745	1,335,062	1,478,361	1,383,688	1,404,392	1,404,643	1,527,637	1,451,878	1,378,707	1,091,644	
	Domestic concept by COICOP	Food and Non-Alcoholic Beverages		189,141	200,818	221,070	203,782	188,274	220,072	222,935	200,178	190,977	209,782	224,584	206,866	210,220	185,617
		Alcoholic Beverages, Tobacco		47,059	57,449	65,366	52,513	49,618	60,250	70,180	59,540	54,140	63,593	70,977	60,237	52,686	43,723
		Clothing and Footwear		93,892	95,201	103,255	93,567	114,919	94,596	103,620	98,637	118,317	101,005	114,397	120,447	105,755	50,370
		Housing, Water, Electricity, Gas and other fuels		196,445	193,609	206,203	204,177	201,235	200,979	204,394	196,434	202,376	202,571	216,649	208,641	213,404	212,667
		Furnishings, Household Equipment and Routine Household Maintenance		68,357	71,671	63,527	74,113	67,075	75,077	72,556	79,675	78,305	81,340	74,764	81,454	74,289	71,835
		Health		66,926	69,103	63,977	61,069	70,539	70,251	72,862	72,075	81,330	68,843	71,912	78,752	79,431	55,292
		Transport		169,069	192,163	211,122	196,500	182,907	201,507	217,256	215,288	184,407	217,290	228,431	211,496	174,547	124,351
		Communication		44,380	47,530	50,581	51,506	48,907	49,390	52,550	53,408	49,614	51,886	55,099	58,010	52,637	47,341
		Recreation and Culture		118,315	140,397	178,732	147,558	126,814	149,795	207,374	152,301	135,333	164,536	203,233	165,907	120,077	68,281
		Education		28,561	32,492	41,889	22,844	28,744	33,717	42,419	24,884	31,891	37,084	46,414	26,661	33,016	18,470
		Restaurants and Hotels		197,616	340,787	462,845	261,770	217,075	383,876	517,831	265,289	215,055	388,750	532,572	283,128	173,879	49,191
		Miscellaneous Goods and Services		140,268	130,488	121,347	119,113	141,176	143,388	164,346	178,658	195,354	191,291	181,415	193,907	196,688	162,582
	of non-resident households on the economic territory		181,222	404,347	595,084	318,466	200,178	427,760	606,218	311,478	202,444	459,495	628,236	345,309	156,819	4,759	
of resident households in the rest of the world		60,223	72,914	131,343	94,507	68,993	78,467	138,453	101,577	71,183	85,610	137,654	105,541	48,983	7		
of Non-Profit Institutions Serving Households	P31_S15	34,112	33,160	34,228	33,201	35,406	35,632	36,368	36,089	43,309	31,926	43,838	31,838	46,474	46,933		
of general government	P3_S13	426,808	424,939	433,363	408,798	429,007	479,110	462,844	526,303	528,827	521,622	502,545	561,638	597,167	583,595		
Gross capital formation	Total gross capital formation	P5	663,706	577,809	622,323	712,301	604,066	653,788	665,238	732,471	772,405	687,060	680,258	747,664	663,463	668,446	
	Gross fixed capital formation by asset	Dwellings	P51	123,758	130,671	128,297	135,043	136,025	148,303	160,936	170,581	157,421	154,560	155,630	161,296	144,019	120,027
		Other buildings and structures	P51	240,941	163,847	162,560	190,672	168,679	177,773	191,976	230,551	203,139	234,732	218,108	265,405	226,444	207,876
		Machinery and equipment	P51	175,623	155,809	201,568	258,335	173,679	194,009	175,260	187,825	271,962	153,187	160,616	167,855	144,377	129,378
		Cultivated biological resources	P51	502	672	553	448	803	810	711	665	665	614	428	504	376	686
		Intellectual property products	P51	101,216	105,002	106,841	106,127	105,551	110,717	115,537	114,293	118,891	119,252	121,321	123,119	125,632	132,224
	Total gross fixed capital formation	P51	644,426	557,394	600,892	691,758	585,989	632,820	646,070	706,282	752,860	665,253	658,476	721,658	643,419	592,087	
Exports of goods and services	P6	4,056,363	4,268,517	4,386,253	4,334,762	4,064,687	4,275,153	4,351,279	4,271,877	4,302,118	4,479,152	4,708,805	4,512,525	4,413,740	3,907,672		
Imports of goods and services	P7	3,755,754	3,746,646	3,868,766	3,927,039	3,700,403	3,831,300	3,866,915	3,953,893	4,131,010	4,041,771	4,226,223	4,160,957	4,145,412	3,724,401		

¹ Users should note that chain-linking gives rise to components of GDP not adding up to the aggregate volume GDP series. This non-additivity, similar to that in other countries' national accounts, is due to mathematical reasons and reflects the fact that chain-linked volumes are calculated by separately extrapolating both totals and their sub-components.

² Chain-linking for variables with a potentially changing sign is aggravated and the results could prove to be erratic. For this reason, variables that are regularly susceptible to this are not required by Eurostat, at least not in absolute terms.

Table 3. GDP identity from the income side by period ...

€ 000

		NACE section	Computational notes	1995	1996	1997	1998	1999	2000	2001	2002	2003
Gross Domestic Product		Total	1=2+26+29	3,059,657	3,209,692	3,410,663	3,629,166	3,829,559	4,153,348	4,285,837	4,515,598	4,787,523
Total compensation of employees		Total	2=3+4+6+...+13	1,387,539	1,494,474	1,554,132	1,645,241	1,723,007	1,797,390	1,940,937	2,008,168	2,132,519
Compensation of employees by industry	Agriculture, forestry and fishing	A	3	8,060	9,301	8,220	11,377	10,317	11,250	11,648	13,283	10,966
	Mining and quarrying; manufacturing; electricity, gas, steam and air conditioning supply; water supply; sewerage, waste management and remediation activities	B to E	4	382,588	376,515	396,630	428,367	446,127	454,859	466,027	467,665	479,248
		of which: C	5	335,502	329,517	336,305	365,805	381,810	390,618	397,163	397,888	413,349
	Construction	F	6	66,380	64,857	65,995	71,599	68,202	72,250	76,555	85,485	90,761
	Wholesale and retail trade; repair of motor vehicles and motorcycles; transportation and storage; accommodation and food service activities	G to I	7	319,405	347,343	372,371	401,026	429,715	449,148	473,005	488,166	522,413
	Information and communication	J	8	43,948	51,809	54,352	58,318	62,235	64,068	69,584	71,074	77,327
	Financial and insurance activities	K	9	64,451	75,264	84,155	87,927	102,007	116,904	123,521	123,965	130,804
	Real estate activities	L	10	1,410	1,384	1,396	1,473	1,241	2,341	2,961	3,284	5,529
	Professional, scientific and technical activities; administrative and support service activities	M to N	11	86,526	91,668	83,512	86,095	90,920	93,345	97,850	106,317	132,902
	Public administration and defence; compulsory social security; education; human health and social work activities	O to Q	12	385,086	444,615	453,957	463,838	474,415	492,717	574,523	600,106	630,502
Arts, entertainment and recreation, repair of household goods and other services	R to U	13	29,684	31,718	33,545	35,221	37,829	40,508	45,262	48,822	52,066	
Gross operating surplus and mixed income			26	1,355,235	1,419,927	1,524,382	1,666,243	1,718,349	1,914,276	1,864,654	2,022,846	2,149,296
Taxes on production and imports			27	368,408	364,628	405,377	393,004	454,941	495,692	534,828	553,647	582,755
Subsidies on production and imports			28	51,524	69,336	73,228	75,322	66,737	54,010	54,582	69,063	77,047
Taxes less subsidies on production and imports			29=27-28	316,884	295,291	332,149	317,682	388,204	441,682	480,246	484,584	505,708
Primary income receivable from the rest of the world			30	330,515	353,493	421,488	557,912	1,255,976	1,027,014	987,384	975,055	913,951
Primary income payable to the rest of the world			31	284,635	327,651	391,659	594,749	1,204,125	1,183,128	961,310	941,157	933,195
Gross National Income at market prices		Total	32=1+30-31	3,105,538	3,235,535	3,440,492	3,592,329	3,881,411	3,997,234	4,311,911	4,549,495	4,768,278

Note: Totals may not add up due to rounding.

...Table 3. GDP identity from the income side by period ...

€ 000

	NACE section	Computational notes	2004	2005	2006	2007	2008	2009	2010	2011	2012
Gross Domestic Product	Total	1=2+26+29	4,895,549	5,159,254	5,403,002	5,790,276	6,206,021	6,259,645	6,815,804	6,924,598	7,364,460
Total compensation of employees	Total	2=3+4+6+...+13	2,171,435	2,236,450	2,385,441	2,514,992	2,676,966	2,740,831	2,869,215	3,070,938	3,246,025
Compensation of employees by industry	Agriculture, forestry and fishing	A 3	10,573	11,573	11,062	12,797	11,973	14,195	13,917	12,950	13,300
	Mining and quarrying; manufacturing; electricity, gas, steam and air conditioning supply; water supply; sewerage, waste management and remediation activities	B to E 4	430,213	440,700	446,824	455,678	502,765	434,986	425,428	444,670	448,855
		of which: C 5	366,946	377,503	383,635	389,222	436,308	370,034	360,838	374,448	380,395
	Construction	F 6	97,627	101,868	105,037	114,177	123,886	119,817	122,455	135,454	129,039
	Wholesale and retail trade; repair of motor vehicles and motorcycles; transportation and storage; accommodation and food service activities	G to I 7	538,190	524,298	555,222	583,914	603,208	591,008	630,571	685,775	723,819
	Information and communication	J 8	74,093	82,492	98,107	101,077	105,560	130,761	123,928	141,666	157,552
	Financial and insurance activities	K 9	157,733	167,975	197,411	212,085	210,081	228,331	243,830	256,996	288,062
	Real estate activities	L 10	5,789	4,214	4,635	5,443	6,071	11,693	9,280	10,261	12,497
	Professional, scientific and technical activities; administrative and support service activities	M to N 11	139,358	162,511	184,070	204,179	211,987	246,582	272,336	305,212	332,849
	Public administration and defence; compulsory social security; education; human health and social work activities	O to Q 12	661,704	678,129	694,854	729,674	786,666	838,045	889,198	931,760	985,177
Arts, entertainment and recreation, repair of household goods and other services	R to U 13	56,156	62,690	88,219	95,968	114,768	125,413	138,272	146,193	154,874	
Gross operating surplus and mixed income		26	2,141,088	2,270,847	2,334,784	2,554,129	2,791,781	2,748,434	3,104,395	2,983,881	3,252,920
Taxes on production and imports		27	654,133	741,548	782,093	826,962	857,877	830,597	914,171	934,378	957,363
Subsidies on production and imports		28	71,108	89,592	99,315	105,806	120,603	60,217	71,978	64,599	91,847
Taxes less subsidies on production and imports		29=27-28	583,025	651,957	682,778	721,156	737,274	770,380	842,193	869,779	865,516
Primary income receivable from the rest of the world		30	1,152,938	2,433,282	4,379,303	8,245,687	10,083,101	7,684,266	6,570,115	10,021,688	10,025,094
Primary income payable to the rest of the world		31	1,172,088	2,590,593	4,598,796	8,533,747	10,178,860	8,013,962	6,920,833	10,183,899	10,372,184
Gross National Income at market prices	Total	32=1+30-31	4,876,400	5,001,942	5,183,509	5,502,216	6,110,262	5,929,949	6,465,086	6,762,387	7,017,370

Note: Totals may not add up due to rounding.

... Table 3. GDP identity from the income side by period...

€ 000

	NACE section	Computational notes	2013	2014	2015	2016	2017	2018	2019
Gross Domestic Product	Total	1=2+26+29	7,944,346	8,751,102	9,996,710	10,538,370	11,637,692	12,490,970	13,390,045
Total compensation of employees	Total	2=3+4+6+...+13	3,455,788	3,716,735	4,096,648	4,519,197	4,890,707	5,353,632	5,803,439
Compensation of employees by industry	Agriculture, forestry and fishing	A 3	13,444	13,513	13,713	13,540	15,923	18,529	21,449
	Mining and quarrying; manufacturing; electricity, gas, steam and air conditioning supply; water supply; sewerage, waste management and remediation activities	B to E 4	470,240	472,118	467,213	474,968	497,947	526,511	542,016
		of which: C 5	398,898	408,477	433,467	437,971	455,004	479,506	491,326
	Construction	F 6	132,542	126,933	140,735	147,769	151,031	159,562	184,694
	Wholesale and retail trade; repair of motor vehicles and motorcycles; transportation and storage; accommodation and food service activities	G to I 7	763,108	780,333	861,479	955,609	1,005,118	1,084,173	1,132,212
	Information and communication	J 8	178,816	193,773	215,730	244,173	260,920	279,853	291,986
	Financial and insurance activities	K 9	308,322	342,549	384,736	403,907	434,489	463,667	522,499
	Real estate activities	L 10	9,610	11,731	15,653	16,235	17,913	20,321	23,793
	Professional, scientific and technical activities; administrative and support service activities	M to N 11	362,176	430,689	513,286	619,497	695,318	785,908	907,514
	Public administration and defence; compulsory social security; education; human health and social work activities	O to Q 12	1,046,536	1,135,329	1,227,439	1,303,323	1,407,827	1,536,882	1,657,190
Arts, entertainment and recreation, repair of household goods and other services	R to U 13	170,994	209,767	256,663	340,176	404,221	478,227	520,086	
Gross operating surplus and mixed income		26	3,582,205	4,034,050	4,830,625	4,871,609	5,469,196	5,746,140	6,163,677
Taxes on production and imports		27	1,001,062	1,121,603	1,204,006	1,284,539	1,423,810	1,593,846	1,638,776
Subsidies on production and imports		28	94,709	121,286	134,569	136,975	146,020	202,648	215,846
Taxes less subsidies on production and imports		29=27-28	906,353	1,000,317	1,069,437	1,147,564	1,277,789	1,391,198	1,422,930
Primary income receivable from the rest of the world		30	10,054,197	10,248,631	10,087,178	9,894,774	9,620,749	9,527,047	9,404,502
Primary income payable to the rest of the world		31	10,448,393	10,704,138	10,639,694	10,926,016	10,812,410	10,466,717	10,420,218
Gross National Income at market prices	Total	32=1+30-31	7,550,149	8,295,595	9,444,194	9,507,128	10,446,030	11,551,300	12,374,329

Note: Totals may not add up due to rounding.

... Table 3. GDP identity from the income side by period

€ 000

	NACE section	Computational notes	2017				2018				2019				2020		
			Q1	Q2	Q3	Q4	Q1	Q2	Q3	Q4	Q1	Q2	Q3	Q4	Q1	Q2	
Gross Domestic Product	Total	1=2+26+29	2,743,306	2,900,988	3,057,086	2,936,312	2,875,249	3,106,840	3,326,800	3,182,080	3,128,882	3,319,564	3,524,139	3,417,460	3,227,929	2,825,241	
Total compensation of employees	Total	2=3+4+6+...+13	1,184,799	1,217,224	1,233,688	1,254,996	1,315,244	1,326,855	1,346,506	1,365,028	1,425,280	1,427,936	1,470,474	1,479,749	1,534,479	1,483,032	
Compensation of employees by industry	Agriculture, forestry and fishing	A	3	3,637	3,966	3,805	4,514	4,291	4,454	4,652	5,131	4,938	5,221	5,516	5,774	5,688	5,908
	Mining and quarrying; manufacturing; electricity, gas, steam and air conditioning supply; water supply; sewerage, waste management and remediation activities	B to E	4	121,464	123,424	125,604	127,456	130,627	131,681	132,628	131,575	133,429	134,068	136,644	137,875	139,238	130,870
		of which: C	5	111,388	112,595	114,619	116,402	118,722	120,154	120,868	119,762	121,038	121,809	124,124	124,354	125,296	117,233
	Construction	F	6	37,137	38,009	38,122	37,763	39,234	39,960	39,459	40,910	42,542	45,484	47,034	49,634	54,839	54,765
	Wholesale and retail trade; repair of motor vehicles and motorcycles; transportation and storage; accommodation and food service activities	G to I	7	243,825	249,967	252,915	258,411	265,332	270,447	274,948	273,446	275,805	283,819	284,728	287,860	288,685	258,625
	Information and communication	J	8	63,393	64,549	65,304	67,674	67,185	69,514	71,179	71,974	72,006	72,078	73,298	74,604	73,807	72,745
	Financial and insurance activities	K	9	105,336	104,868	107,486	116,799	114,368	113,646	114,057	121,596	129,152	127,609	133,660	132,078	137,659	131,631
	Real estate activities	L	10	4,208	4,372	4,579	4,755	4,802	4,932	5,179	5,408	5,654	5,954	5,944	6,241	6,481	6,330
	Professional, scientific and technical activities; administrative and support service activities	M to N	11	166,664	175,847	175,957	176,850	189,484	192,523	197,474	206,427	218,676	222,603	228,827	237,408	251,416	243,475
	Public administration and defence; compulsory social security; education; human health and social work activities	O to Q	12	344,310	353,096	357,567	352,855	384,642	381,301	386,687	384,253	417,219	402,997	423,265	413,709	441,984	441,933
Arts, entertainment and recreation, repair of household goods and other services	R to U	13	94,826	99,125	102,349	107,920	115,279	118,396	120,242	124,309	125,859	128,103	131,559	134,566	134,682	136,748	
Gross operating surplus and mixed income		26	1,258,069	1,395,591	1,469,346	1,346,190	1,251,304	1,454,240	1,578,211	1,462,384	1,371,233	1,533,178	1,679,608	1,579,658	1,409,687	1,218,165	
Taxes on production and imports		27	339,017	318,740	390,618	375,434	353,983	370,121	449,062	420,679	379,432	414,357	422,508	422,478	372,171	304,494	
Subsidies on production and imports		28	38,580	30,566	36,566	40,309	45,282	44,376	46,979	66,011	47,062	55,907	48,451	64,426	88,409	180,450	
Taxes less subsidies on production and imports		29=27-28	300,438	288,174	354,052	335,126	308,701	325,745	402,083	354,669	332,370	358,450	374,057	358,052	283,763	124,044	
Primary income receivable from the rest of the world		30	2,405,586	2,384,180	2,431,363	2,399,620	2,386,891	2,379,404	2,402,159	2,358,594	2,369,584	2,360,094	2,344,069	2,330,755	2,319,218	2,338,810	
Primary income payable to the rest of the world		31	2,688,663	2,662,692	2,714,580	2,746,476	2,577,319	2,580,624	2,663,547	2,645,227	2,610,670	2,601,395	2,589,435	2,618,718	2,563,164	2,641,053	
Gross National Income at market prices	Total	32=1+30-31	2,460,229	2,622,476	2,773,869	2,589,456	2,684,821	2,905,620	3,065,412	2,895,447	2,887,796	3,078,263	3,278,773	3,129,497	2,983,982	2,522,998	

Note: Totals may not add up due to rounding.

Methodological Notes

1. The compilation of quarterly national accounts estimates in the context of the COVID-19 crisis

Under normal circumstances, GDP estimates are based on established sources and estimation techniques, which have been tested and evaluated carefully, as well as documented. GDP is estimated independently from the output approach and expenditure approach, complemented by estimates of income-related data. These estimates are based on a multitude of sources such as tourism statistics, short-term business statistics (STS), trade and balance of payments statistics, as well as administrative data.

Eurostat and national statistical authorities in the European Statistical System (ESS) have been working hard together to elaborate guidelines and notes on how to address the statistical challenges brought about by COVID-19 and thereby ensure that European statistics continue to be based on sound foundations. These guidelines cover the compilation of national accounts, as well as important national accounts data sources, such as the HICP, the Labour Force Survey, Short-term business statistics, and intra-EU trade in goods. NSO followed these guidelines to mitigate the impact resulting from this crisis, which meant delays in data availability, lower response rates and possible quality issues. In this way, it ensured that the data continued to capture economic developments in the most reliable manner.

In view of these unprecedented developments, a thorough examination was carried out on the imputation methods and models used in the compilation of national accounts, given that, in some cases, past correlations between indicators and macroeconomic statistics were not expected to hold anymore during the COVID-19 crisis. In absence of traditional sources, compilers had to make assumptions about industries which were fully or partially 'closed'. Furthermore, statisticians referred to alternative or complementary information, such as business and consumer surveys, information from professional federations and administrative data, in order to fill in for gaps in the established data sources.

NSO is committed to maintain the usual dissemination pattern of quarterly national accounts with the most accurate estimates possible, however, it is important to bear in mind that first estimates may be subject to larger revisions than usual.

For further details, refer to:

Eurostat's methodological note 'Guidance on Quarterly National Accounts (Including Flash) Estimates in the Context of the COVID-19 Crisis', available at:

https://ec.europa.eu/eurostat/documents/10186/10693286/QNA_estimates_guidance.pdf

Eurostat's methodological note 'Guidance on the Publication and Transmission of National Accounts Data and Metadata in the Context of the COVID-19 Crisis', available at:

https://ec.europa.eu/eurostat/documents/10186/10693286/NA_guidance.pdf

Eurostat's methodological note 'Guidance on Time Series Treatment in the Context of the COVID-19 Crisis', available at:

https://ec.europa.eu/eurostat/documents/10186/10693286/Time_series_treatment_guidance.pdf

2. Impact of some policy measures in the context of the COVID-19 crisis

The Government announced active policy measures in order to mitigate the economic and social impact of the COVID-19 pandemic.

Such policy measures include, but are not limited to, the following:

- Employment-related measures: government support for keeping employees on the payroll system despite a slowdown in business activity, and support for self-employed and small businesses;
- Tax-related measures: deferral of tax deadlines.

In this news release, the new measures to support businesses in retaining their employees in the context of COVID-19 by financing wages, partly of fully, were recorded as subsidies on production (D.39) to employers.

Taxes on production and imports are recorded when activities, transactions or other events occur and create the liability to pay taxes. In this news release, estimates were specifically necessary for VAT, classified as taxes on production and imports, due to the Government's announced deferrals. This implies that revisions may be necessary in the future.

For further details, refer to:

Eurostat's methodological note 'Draft Note on Statistical Implications of Some Policy Measures in the Context of the COVID-19 Crisis', available at:

https://ec.europa.eu/eurostat/documents/10186/10693286/GFS_draft_note.pdf

3. Timeline of events

Below is a timeline which shows the unfolding of relevant local developments in relation to COVID-19, which were considered in the compilation of national accounts for 2020 Q2.

03 April 2020	Tighter travel restrictions between Malta and Gozo. Legal Notice 118 of 2020.
07 April 2020	Maltese nationals abroad to return to Malta by no later than Sunday 12 April 2020.
09 April 2020	Government of Malta announces voluntary repatriation assistance scheme for all foreign nationals.

30 April 2020	<p>The Commissioner for Revenue publishes a notice extending the COVID-19 tax deferral scheme, applying also to VAT, employee taxes, maternity fund payments, social security contributions (including of self-employed persons) and provisional tax which fall due in March and up to end of June 2020.</p> <p>Malta's flight ban extended until the end of May.</p> <p>Government of Malta extends COVID-19 wage supplement by two months, until the end of June.</p>
04 May 2020	<p>The closure of non-essential retail outlets is partially revoked. As from 4 May 2020, the following outlets reopened - shops whereby their principal business relates to selling of clothing, sportswear, jewellery, hand bags and leather goods, costume jewellery and accessories, footwear, non-prescription eye-wear, perfumeries, beauty products, haberdasheries, soft furnishings, souvenir shops, discount stores, luggage shops, toy shops, hobby shops, furniture shops and florists. Lotto booths are also allowed to open as from 4 May. Legal Notices 170, 171 and 172 of 2020.</p> <p>However, vaping shops and outlets providing non-essential services (i.e. hairdressers, barbers, beauticians, spas, nail artists, nail technicians and tattooists) remained closed. Similarly, the revocation did not apply to bars, restaurants, cafeterias, snack bars, cinemas, gymnasiums, museums, exhibitions, clubs, discotheques, night clubs, open-air markets, indoor swimming pools, national swimming pool, massage parlours, gaming premises including controlled gaming premises, bingo halls, casinos, gaming parlours and betting shops. Nonetheless, restaurants, cafeterias, snack bars and kiosks were allowed to provide delivery and take-away services to the community and room service to hotel guests.</p> <p>The number of persons that were allowed to gather in public spaces was increased from 3 to 4. This prohibition did not apply if the persons live in the same residence. Legal Notices 173 and 174 of 2020.</p> <p>Prohibition of non-essential travel between Malta and Gozo lifted. Legal Notice 175 of 2020.</p> <p>The Court registry was removed from the order of the closure of the Courts of Justice with effect from 4 May 2020. However, the Courts of Justice remained closed and any time limits which were suspended prior to 4 May remained suspended. Legal Notices 176 and 177 of 2020.</p> <p>The order to close Vehicles Roadworthiness Testing Stations was revoked with effect from the 4 May 2020. Legal Notice 178 of 2020.</p>
22 May 2020	<p>Various establishments and businesses reopened including hairdressers and barber shops, beauticians, nail technicians and nail artists, drive-in cinemas, outdoor cinemas and outdoor theatres, catering establishments including restaurants and snack bars, accommodation establishments, outdoor establishments including lidos, swimming pools and outside entertainment, beach establishments and beach concessions, and open-air markets. Legal Notices 202, 204 of 2020.</p> <p>In terms of sports activities, individual non-contact sports and outdoor sports training were permitted subject to a limit of six persons. Legal Notice 205 of 2020.</p> <p>The suspension of the performance of obligations relation to a registered promise of sale agreement and the expiration of a promise of sale duly registered remained in force for twenty (20) days after the 22nd May 2020. Legal Notice 203 of 2020.</p> <p>Funeral ceremonies including mass, resumed under certain conditions.</p>
05 June 2020	<p>Other establishments opened again including gyms, spas, indoor pools, vaping shops, tattooists, bars (which do not qualify as catering establishments), museums, clubs, discotheques, night clubs, massage parlours, gaming premises including controlled gaming premises, bingo halls, casinos, gaming parlours and betting shops. Restaurants, cafeterias, snack bars and clubs were to provide their service outdoors as far as practicable or if indoors, at reduced capacity.</p> <p>The Closure of Schools Order was amended, thereby limiting such order to kindergarten centres, colleges, Sixth Forms/Higher Secondaries, the University of Malta, other tertiary educational institutions and further and higher educational institutions. This meant that as from 5 June, all other education / training establishments resumed their activities including child-care centres and English Language Teaching schools. Legal Notice 229 of 2020.</p> <p>Organised events were no longer suspended such as cultural, recreational, entertainment, sporting and religious events, outdoor sport training and exhibitions in public or private places. Legal Notice 228 of 2020.</p> <p>Gathering of masses in organised events was allowed for up to 75 persons. Legal Notices 231 and 233 of 2020.</p> <p>Legal Notice 232 of 2020 repealed a number of orders, thereby allowing all places open to the public, non-essential retail outlets and local tribunals to resume their operations and vulnerable persons to go out.</p> <p>Closure of the Courts of Justice Order repealed. Legal Notice 230 of 2020.</p>

30 June 2020

Legal Notice 243 of 2020 came into force on 30 June 2020 and repealed the following orders and regulations:

(i) Closure of Schools order; (ii) Epidemics and Infectious Disease (suspension of legal times relating to promise of sale agreements, notarial and related matters) order; (iii) Epidemics and Infectious Disease (suspension of legal and judicial times) order; (iv) Suspension of Legal Times relating to Promise of Sale Agreements, Notarial and other related matters (epidemics and infectious disease) order; (v) Enforcement of the order relating to the suspension of organised events regulations.

Sources:

Government of Malta Legal Notices.

4. Data in this news release are in line with the European System of Accounts (ESA) 2010 Manual (ISBN 978-92-79-31242-7). This system of accounts is mandatory for all EU Member States. The accounts are subject to audit by the European Court of Auditors and Eurostat's GNI Committee to ensure reliability, comparability and exhaustiveness.
5. Gross Domestic Product (GDP) is an estimate of the value of goods and services produced in the economy over a period of time. The GDP is estimated at current prices using the Production Approach, aggregating the output of the various productive sectors net of the cost of intermediate inputs. The Expenditure Approach is reconciled with the Production Approach and is used to derive an estimate of GDP in volume terms, in other words, excluding the effects of price inflation on market prices. The Income Approach shows how GDP at market prices is distributed into compensation of employees, operating surplus of enterprises and taxes on production and imports net of subsidies.
6. Data in this News Release should be considered as final for 1995-2015 and provisional for 2016 to date.
7. Data users must be aware that the industrial activities of General Government are spread over 21 different NACE categories (at A88 division) and include local councils and extra-budgetary units that are financially dependent on Government. NACE 84 is the largest category and, in terms of gross value added, represents approximately 40 per cent of the General Government sector in 2019.
8. The ESA 2010 GNI Inventory provides a detailed explanation of sources and methods used for estimating GNI in Malta. It is the basis for the Eurostat assessment of the quality and exhaustiveness of GNI data and their compliance with ESA 2010 in the context of the GNI for own resources purposes. The Inventory is a reference document that is kept up-to-date to reflect the latest methodology in place. Complimentary to this inventory, process tables have been compiled for reference year 2010. Process tables enable users to understand the compilation process of national accounts and thus shows the transition from basic data sources to final balanced national accounts figures. The GNI Inventory and the Process Tables are available online: http://nso.gov.mt/en/nso/Sources_and_Methods/Unit_A1/National_Accounts/Pages/Gross-Domestic-Product.aspx

Users should be informed that the GNI Inventory currently available on the NSO website describes the sources and methods of the ESA 2010 series as published in September 2014. The GNI Inventory will be updated with the methodological changes presented in this document in the upcoming year.

9. Data for 1995 to 2016 are available on the online version of this news release in Excel format at: https://nso.gov.mt/en/News_Releases/View_by_Unit/Unit_A1/National_Accounts/Pages/Gross-Domestic-Product.aspx
10. Further details are available from the NSO upon written request or from Eurostat's website: <http://ec.europa.eu/eurostat/data/database>
11. More information relating to this news release may be accessed at:

Statistical Concepts: <http://nso.gov.mt/metadata/concepts.aspx>

Metadata: <http://nso.gov.mt/metadata/reports.aspx?id=1>

Classifications: http://nso.gov.mt/metadata/classificationdetails.aspx?id=ESA_2010

Statistical Database: <http://nso.gov.mt/statdb/start>

European statistics comparable to data in this news release are available at:

[EUROSTAT Website/Homepage/Complete Database](#)

Data Navigation Tree

>Database by themes

>Economy and finance

>National accounts (ESA 2010) (na10)

>Annual national accounts (nama_10)

>Quarterly national accounts (namq_10)

>Tables by themes

>Economy and finance

>National accounts (including GDP) (t na)

>Annual national accounts (t_nama)

>Quarterly national accounts (t_namq)

For further assistance send a request from:

<http://nso.gov.mt/en/Services/Pages/Request-for-Information.aspx>