

During the third quarter of 2022, sea transport between Malta and Gozo registered increases in passengers and vehicles and a decrease in trips when compared to the corresponding quarter of 2021.

Sea Transport between Malta and Gozo: Q3/2022

Sea transport between Malta and Gozo

Between July and September 2022, a total of 11,433 trips were carried out, carrying a total of 1,788,244 passengers (Table 1). July was the busiest month recording a total of 3,892 trips or 34.0 per cent of total trips for the quarter (Tables 3 and 7).

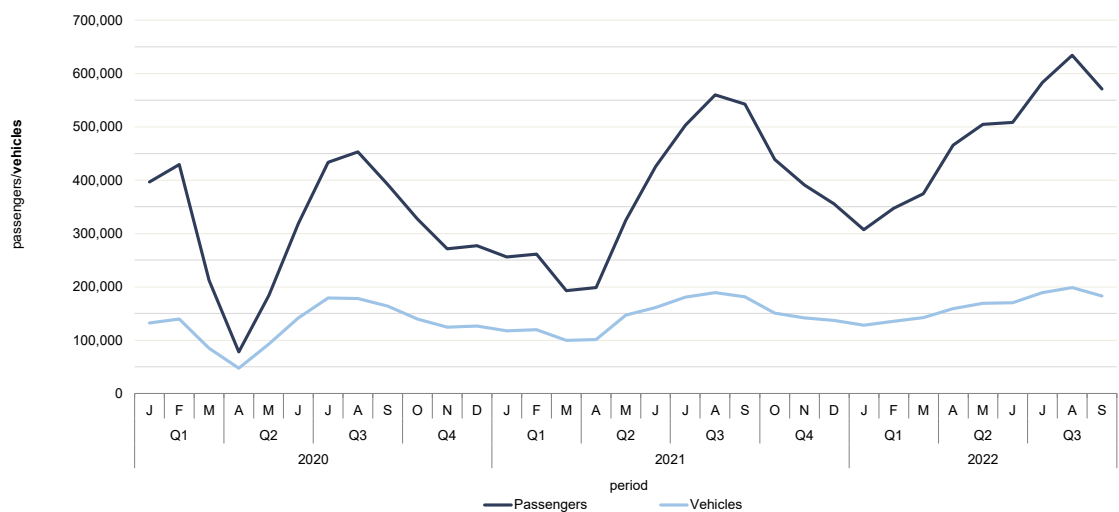
Sea transport between Mġarr and Ċirkewwa

A total of 1,590,386 passengers travelled between Mġarr and Ċirkewwa during the third quarter of 2022, an increase of 13.4 per cent when compared to the corresponding quarter of 2021. The highest number of passengers was recorded in August - 562,464 or 35.4 per cent of the total for the quarter. When compared to the previous year, the number of vehicles increased by 3.6 per cent, totalling 571,125 (Tables 2 and 3).

The number of trips during the third quarter amounted to 9,138, an increase of 6.9 per cent over the same period in 2021 (Table 2). August registered the highest number of trips - 3,084 or 33.7 per cent of total trips for the quarter (Table 3).

During January-September 2022, both passenger and vehicle traffic originating from Ċirkewwa was busiest on Fridays and Saturdays. On the other hand, from the Mġarr terminal, passenger traffic was highest on Sundays and Saturdays, while the highest number of vehicles were recorded on Sundays and Mondays (Charts 4 and 5).

Chart 1. Passengers and vehicles crossing between Malta and Gozo



Sea transport between Mġarr and Valletta

During the third quarter of 2022, a total of 2,295 trips were carried out carrying a total of 197,858 passengers (Table 6). When compared to same quarter in 2021, the number of trips and passengers decreased by 45.4 and 2.8 per cent respectively. July registered the highest number of trips - 824 or 35.9 per cent of total trips for the quarter - while August recorded the highest number of passengers - 71,871 or 36.3 per cent for the quarter (Table 7).

Map 1. Distribution of trips between Malta and Gozo during Q3/2022

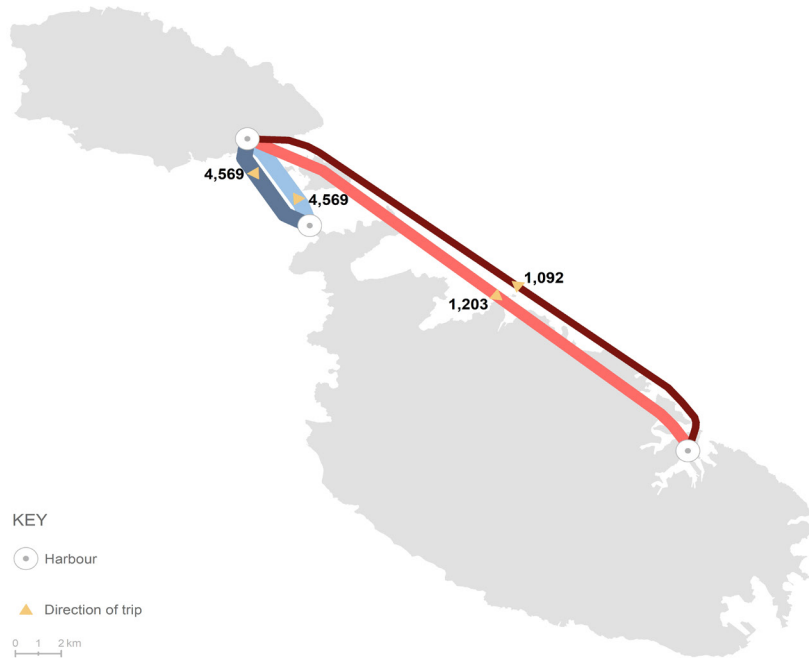


Chart 2. Distribution of passengers by type of transport between Malta and Gozo during Q3/2022

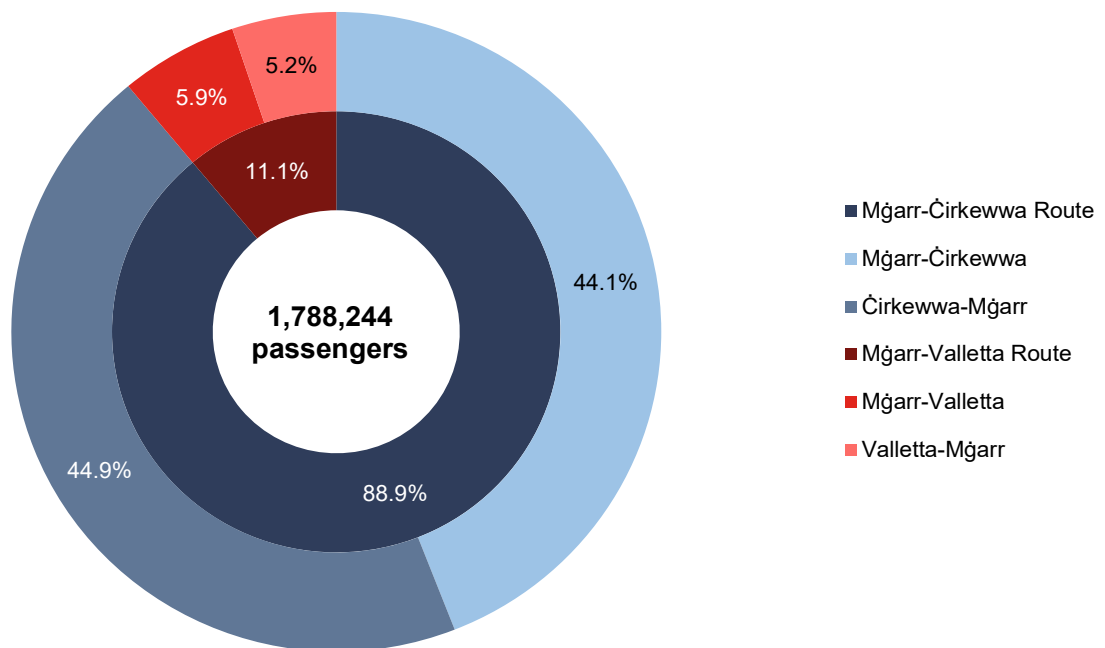


Table 1. Total sea transport between Malta and Gozo by year and quarter

Quarter	2020	2021	2022	Change	Percentage change	
				2022/2021	2022/2021	
Trips	Q1	7,324	6,139	9,402	3,263	53.2
	Q2	5,334	8,341	10,338	1,997	23.9
	Q3	8,300	12,758	11,433	-1,325	-10.4
	Q4	8,094	11,215			
	Total	29,052	38,453			
Vehicles	Q1	356,997	336,816	406,285	69,469	20.6
	Q2	282,446	409,569	498,214	88,645	21.6
	Q3	521,914	551,438	571,125	19,687	3.6
	Q4	390,781	429,806			
	Total	1,552,138	1,727,629			
Passengers	Q1	1,038,142	710,749	1,029,237	318,488	44.8
	Q2	581,311	949,837	1,478,626	528,789	55.7
	Q3	1,278,474	1,605,604	1,788,244	182,640	11.4
	Q4	876,054	1,185,502			
	Total	3,773,981	4,451,692			

Note: The fast ferry service between Mġarr and Valletta commenced on 1 June 2021. As from second quarter of 2021 aggregate values comprising of trips and passengers carried by both the fast ferry service and the Gozo Channel are included in the above table.

Table 2. Sea transport between Mġarr and Ċirkewwa by year and quarter

Quarter	2020	2021	2022	Change	Percentage change	
				2022/2021	2022/2021	
Trips	Q1	7,324	6,139	7,883	1,744	28.4
	Q2	5,334	7,255	8,675	1,420	19.6
	Q3	8,300	8,552	9,138	586	6.9
	Q4	8,094	8,479			
	Total	29,052	30,425			
Vehicles	Q1	356,997	336,816	406,285	69,469	20.6
	Q2	282,446	409,569	498,214	88,645	21.6
	Q3	521,914	551,438	571,125	19,687	3.6
	Q4	390,781	429,806			
	Total	1,552,138	1,727,629			
Passengers	Q1	1,038,142	710,749	961,978	251,229	35.3
	Q2	581,311	907,453	1,352,221	444,768	49.0
	Q3	1,278,474	1,402,030	1,590,386	188,356	13.4
	Q4	876,054	1,066,788			
	Total	3,773,981	4,087,020			

Chart 3. Passengers and vehicles to and from Mġarr and Ċirkewwa: July-September

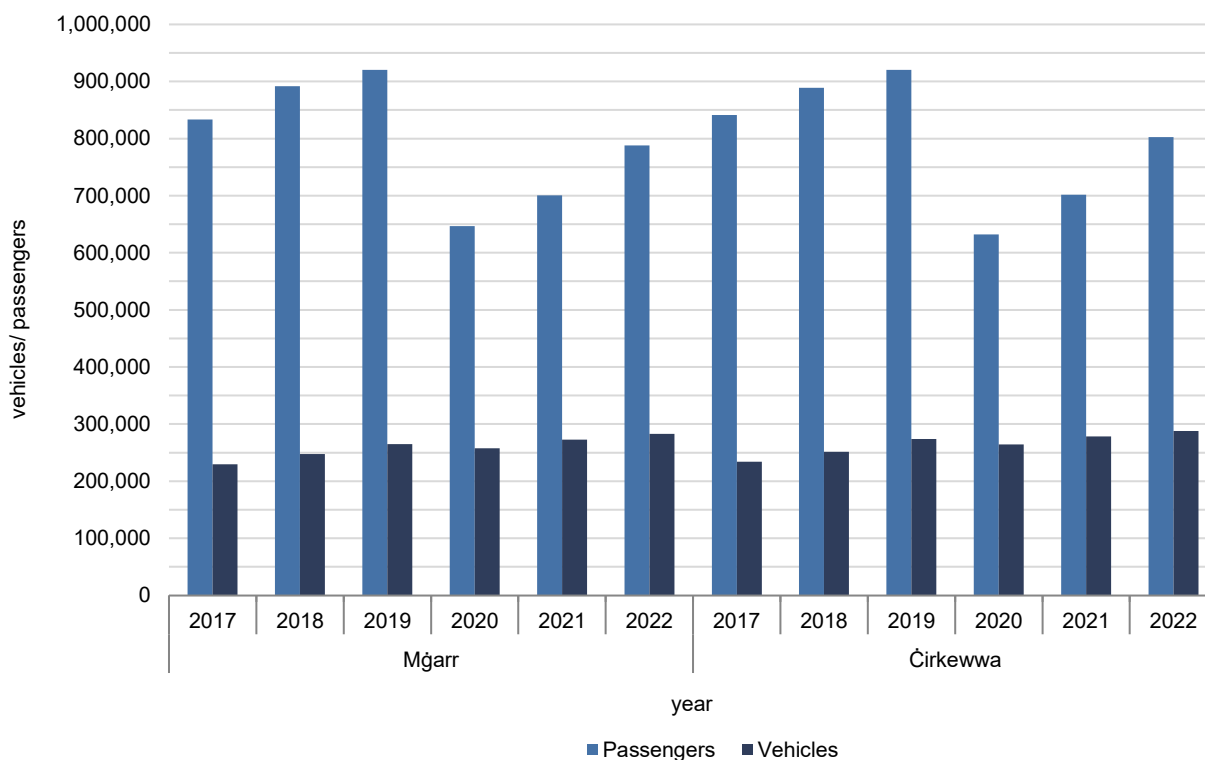


Table 3. Sea transport between Mġarr and Ċirkewwa by year and month

Month	2020	2021	2022	Change	Percentage change
				2022/2021	2022/2021
Trips					
January	2,454	2,090	2,329	239	11.4
February	2,494	1,939	2,542	603	31.1
March	2,376	2,110	3,012	902	42.7
April	1,534	2,034	2,899	865	42.5
May	1,664	2,504	2,812	308	12.3
June	2,136	2,717	2,964	247	9.1
July	2,790	2,858	3,068	210	7.3
August	2,788	2,876	3,084	208	7.2
September	2,722	2,818	2,986	168	6.0
October	2,760	2,826			
November	2,642	2,793			
December	2,692	2,860			
Total	29,052	30,425			
Vehicles					
January	132,191	117,519	128,063	10,544	9.0
February	139,905	119,878	135,705	15,827	13.2
March	84,901	99,419	142,517	43,098	43.3
April	47,805	101,106	158,997	57,891	57.3
May	93,064	147,322	168,949	21,627	14.7
June	141,577	161,141	170,268	9,127	5.7
July	179,425	180,635	189,129	8,494	4.7
August	178,527	189,183	198,795	9,612	5.1
September	163,962	181,620	183,201	1,581	0.9
October	139,860	150,688			
November	124,499	141,927			
December	126,422	137,191			
Total	1,552,138	1,727,629			
Passengers					
January	396,542	255,979	289,539	33,560	13.1
February	429,259	261,636	324,268	62,632	23.9
March	212,341	193,134	348,171	155,037	80.3
April	78,407	198,964	436,079	237,115	119.2
May	184,082	325,103	456,618	131,515	40.5
June	318,822	383,386	459,524	76,138	19.9
July	433,455	444,491	514,883	70,392	15.8
August	452,929	487,074	562,464	75,390	15.5
September	392,090	470,465	513,039	42,574	9.0
October	327,214	392,221			
November	271,499	345,719			
December	277,341	328,848			
Total	3,773,981	4,087,020			

Table 4. Sea transport to and from Mġarr and Ċirkewwa by year and month

Month	Ċirkewwa - Mġarr		Change	Percentage change	Mġarr - Ċirkewwa		Change	Percentage change
	2021	2022	2022/2021	2022/2021	2021	2022	2022/2021	2022/2021
Trips								
January	1,045	1,164	119	11.4	1,045	1,165	120	11.5
February	969	1,271	302	31.2	970	1,271	301	31.0
March	1,055	1,506	451	42.7	1,055	1,506	451	42.7
April	1,017	1,450	433	42.6	1,017	1,449	432	42.5
May	1,253	1,406	153	12.2	1,251	1,406	155	12.4
June	1,358	1,482	124	9.1	1,359	1,482	123	9.1
July	1,429	1,534	105	7.3	1,429	1,534	105	7.3
August	1,438	1,542	104	7.2	1,438	1,542	104	7.2
September	1,409	1,493	84	6.0	1,409	1,493	84	6.0
October	1,411				1,415			
November	1,397				1,396			
December	1,430				1,430			
Total	15,211				15,214			
Vehicles								
January	57,777	63,154	5,377	9.3	59,742	64,909	5,167	8.6
February	60,569	68,659	8,090	13.4	59,309	67,046	7,737	13.0
March	50,526	72,266	21,740	43.0	48,893	70,251	21,358	43.7
April	51,166	80,481	29,315	57.3	49,940	78,516	28,576	57.2
May	74,198	84,328	10,130	13.7	73,124	84,621	11,497	15.7
June	81,664	86,206	4,542	5.6	79,477	84,062	4,585	5.8
July	92,812	95,949	3,137	3.4	87,823	93,180	5,357	6.1
August	94,287	99,799	5,512	5.8	94,896	98,996	4,100	4.3
September	91,369	92,417	1,048	1.1	90,251	90,784	533	0.6
October	76,734				73,954			
November	70,945				70,982			
December	70,568				66,623			
Total	872,615				855,014			
Passengers								
January	124,175	141,940	17,765	14.3	131,804	147,599	15,795	12.0
February	131,298	162,682	31,384	23.9	130,338	161,586	31,248	24.0
March	97,122	174,337	77,215	79.5	96,012	173,834	77,822	81.1
April	101,177	218,856	117,679	116.3	97,787	217,223	119,436	122.1
May	160,611	229,081	68,470	42.6	164,492	227,537	63,045	38.3
June	191,899	232,727	40,828	21.3	191,487	226,797	35,310	18.4
July	224,591	261,973	37,382	16.6	219,900	252,910	33,010	15.0
August	242,205	282,137	39,932	16.5	244,869	280,327	35,458	14.5
September	234,581	258,425	23,844	10.2	235,884	254,614	18,730	7.9
October	200,367				191,854			
November	171,527				174,192			
December	168,566				160,282			
Total	2,048,119				2,038,901			

Table 5. Sea transport between Mġarr and Ċirkewwa by year and day of the week: January-September

Day of the week		January-September			Change	Percentage change
		2020	2021	2022	2022/2021	2022/2021
Trips	Monday	2,928	3,133	3,678	545	17.4
	Tuesday	2,924	3,085	3,648	563	18.2
	Wednesday	2,949	3,070	3,641	571	18.6
	Thursday	2,991	3,115	3,656	541	17.4
	Friday	3,155	3,316	3,787	471	14.2
	Saturday	2,917	2,960	3,584	624	21.1
	Sunday	3,094	3,267	3,702	435	13.3
	Total	20,958	21,946	25,696	3,750	17.1
Vehicles	Monday	164,341	178,098	199,013	20,915	11.7
	Tuesday	151,582	171,712	193,949	22,237	13.0
	Wednesday	159,346	176,277	205,478	29,201	16.6
	Thursday	166,369	184,070	204,483	20,413	11.1
	Friday	188,870	209,193	232,224	23,031	11.0
	Saturday	160,701	189,283	219,767	30,484	16.1
	Sunday	170,148	189,190	220,710	31,520	16.7
	Total	1,161,357	1,297,823	1,475,624	177,801	13.7
Passengers	Monday	400,164	401,877	512,828	110,951	27.6
	Tuesday	352,759	383,852	486,394	102,542	26.7
	Wednesday	381,635	401,100	531,946	130,846	32.6
	Thursday	402,664	407,367	531,842	124,475	30.6
	Friday	459,136	470,128	593,354	123,226	26.2
	Saturday	423,506	464,995	612,307	147,312	31.7
	Sunday	478,063	490,913	635,914	145,001	29.5
	Total	2,897,927	3,020,232	3,904,585	884,353	29.3

Chart 4. Vehicles to and from Mġarr and Ċirkewwa by day of the week: January-September

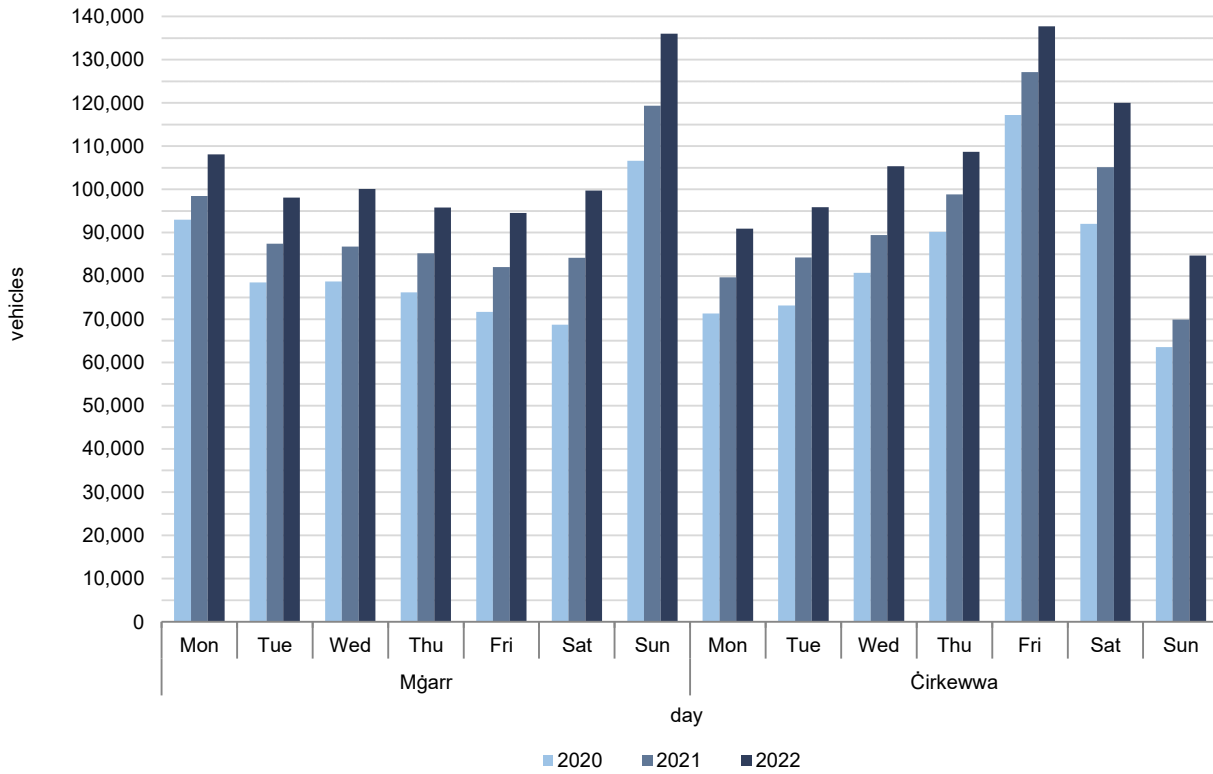


Chart 5. Passengers to and from Mġarr and Ċirkewwa by day of the week: January-September

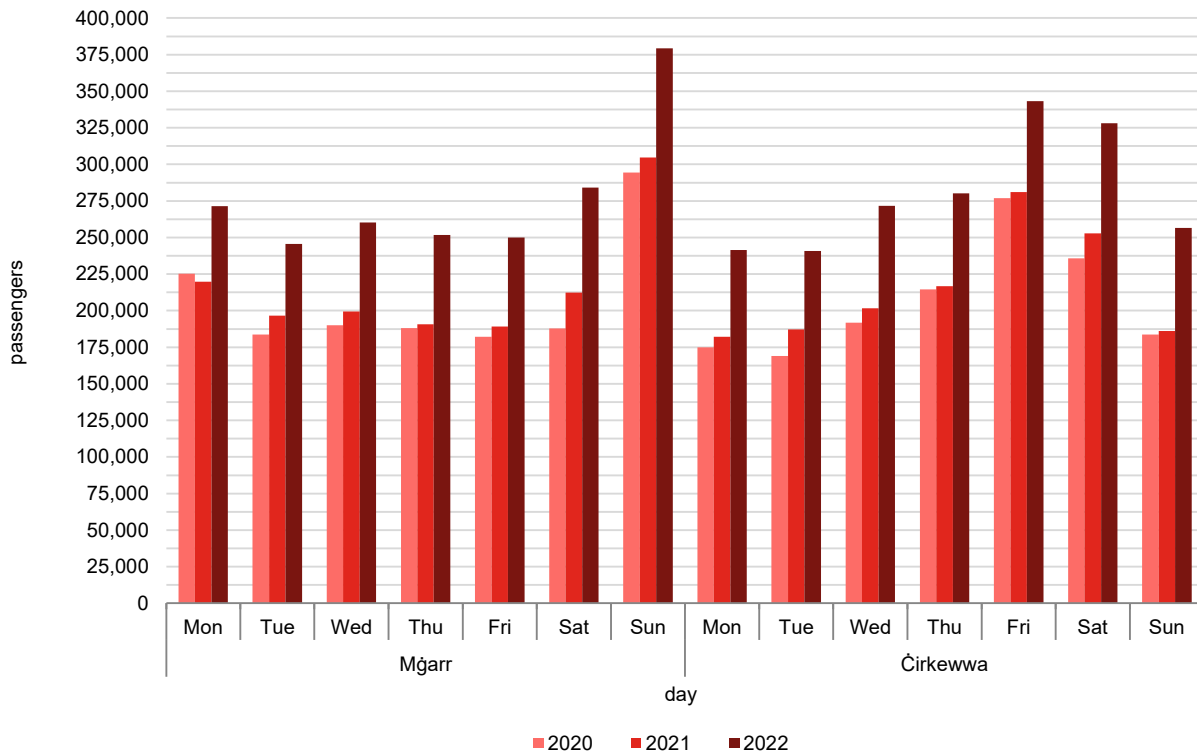


Table 6. Sea transport between Mġarr and Valletta by year and quarter

Quarter		2021	2022
Trips	Q1	-	1,519
	Q2	1,086	1,663
	Q3	4,206	2,295
	Q4	2,736	
	Total	8,028	
Passengers	Q1	-	67,259
	Q2	42,384	126,405
	Q3	203,574	197,858
	Q4	118,714	
	Total	364,672	

Note: The fast ferry service does not allow for the transport of vehicles, thus, only foot passengers are included.

Table 7. Sea transport to and from Mġarr and Valletta by month: 2022

Month	Valletta-Mġarr	Mġarr-Valletta	Total	
Trips	January	231	259	490
	February	213	236	449
	March	292	288	580
	April	216	208	424
	May	331	306	637
	June	311	291	602
	July	396	428	824
	August	375	407	782
	September	321	368	689
	October			
	November			
	December			
	Total			
Passengers	January	8,210	9,490	17,700
	February	11,124	11,927	23,051
	March	12,806	13,702	26,508
	April	15,014	14,714	29,728
	May	23,654	24,418	48,072
	June	23,547	25,058	48,605
	July	31,923	36,360	68,283
	August	33,771	38,100	71,871
	September	27,012	30,692	57,704
	October			
	November			
	December			
	Total			

Note: The fast ferry service does not allow for the transport of vehicles, thus, only foot passengers are included.

Methodological Notes

1. The source of the data included in this release is administrative information provided by the Gozo Channel Co. Ltd and Transport Malta.
2. The fast ferry service operating between Mġarr and Valletta commenced on 1 June 2021.
3. The table below illustrates the vehicle and passenger capacity of each Gozo Channel vessel:

Carrying capacity

Vessel	Vehicles	Passengers
MV Gaudos	72	900
MV Malita	138	900
MV Ta' Pinu	138	900
MV Nikolaos	160	650 (Summer)/ 350 (Winter)

Periods when vessels were out of service for docking purposes:

MV Gaudos: 04/01/2021 - 11/02/2021.

MV Malita: 09/01/2019-31/01/2019, 06/02/2019-13/02/2019, 07/03/2019-08/03/2019, 25/11/2019-02/12/2019 and 06/01/2022-10/02/2022.

MV Ta' Pinu: 06/01/2020-10/02/2020.

MV Nikolaos started operating on 13/06/2019.

MV Nikolaos was put temporarily out of service as from 27/04/2020-02/07/2020 and 25/04/2022-29/05/2022.

4. The table below illustrates the passenger capacity of each fast ferry service vessel:

Carrying capacity

Vessel	Passengers
Your Wisdom (Gozo Fast Ferry Ltd)	296
Your Faith (Gozo Fast Ferry Ltd)	296
Gozo Express (Virtu Ferries Ltd)*	308
San Franġisk (Virtu Ferries Ltd)	316

*The fast ferry service vessel, Gozo Express (Virtu Ferries Ltd) replaced San Pawl (Virtu Ferries Ltd) on 17/05/2022.

5. Data for passengers travelling between Mġarr and Ċirkewwa comprises of foot and vehicle passengers and vehicle drivers. The fast ferry service does not allow for the transport of vehicles thus, only foot passengers are included.
6. Different approaches to data collection are being applied at the Mġarr and Ċirkewwa harbours with regards to the Gozo Channel service. Data source for the Mġarr side includes Automated Ticketing System (ATS), while data for the Ċirkewwa side is dependent on the manual clicking system.
7. The data is not normally subject to revision.
8. References to this news release are to be cited appropriately.
9. More information relating to this news release may be accessed at:

Sources and Methods:

https://nso.gov.mt/en/nso/Sources_and_Methods/Unit_02/Regional_and_Geospatial_Statistics/Pages/Sea-Transport-between-Malta-and-Gozo.aspx

10. Statistics in this News Release should be interpreted in the context of the COVID-19 situation.
11. A detailed news release calendar is available on https://nso.gov.mt/en/News_Releases/Release_Calendar/Pages/News-Release-Calendar.aspx