

Total inbound tourists for September 2022 were estimated at 246,066, while total nights spent amounted to 1,973,636.

Inbound Tourism: September 2022

During the month under review, a total of 223,714 inbound tourists visited Malta for holiday purposes, and 14,666 tourists came for business purposes. The largest share of inbound tourists were aged between 25 and 44 (38.9 per cent), followed by the 45-64 age bracket (28.1 per cent) (Table 1). Italian, French and German residents made up 34.7 per cent of total inbound tourists (Table 5).

The largest share of guest nights (82.0 per cent) was spent in rented accommodation establishments (Table 3). The average length of stay of total inbound tourists stood at 8.0 nights (Table 1).

Total tourist expenditure surpassed €253.4 million. The average expenditure per night was estimated at €128.4 (Table 4).

January-September 2022

Inbound tourists during the first 9 months of 2022 amounted to 1,720,432, while the total nights spent exceeded 12.7 million (Tables 6 and 8).

Total tourist expenditure was estimated at €1.5 billion (Table 9). Total expenditure per capita stood at €896, decreasing from €967 in 2021 (Table 11) ■

Chart 1. Inbound tourists

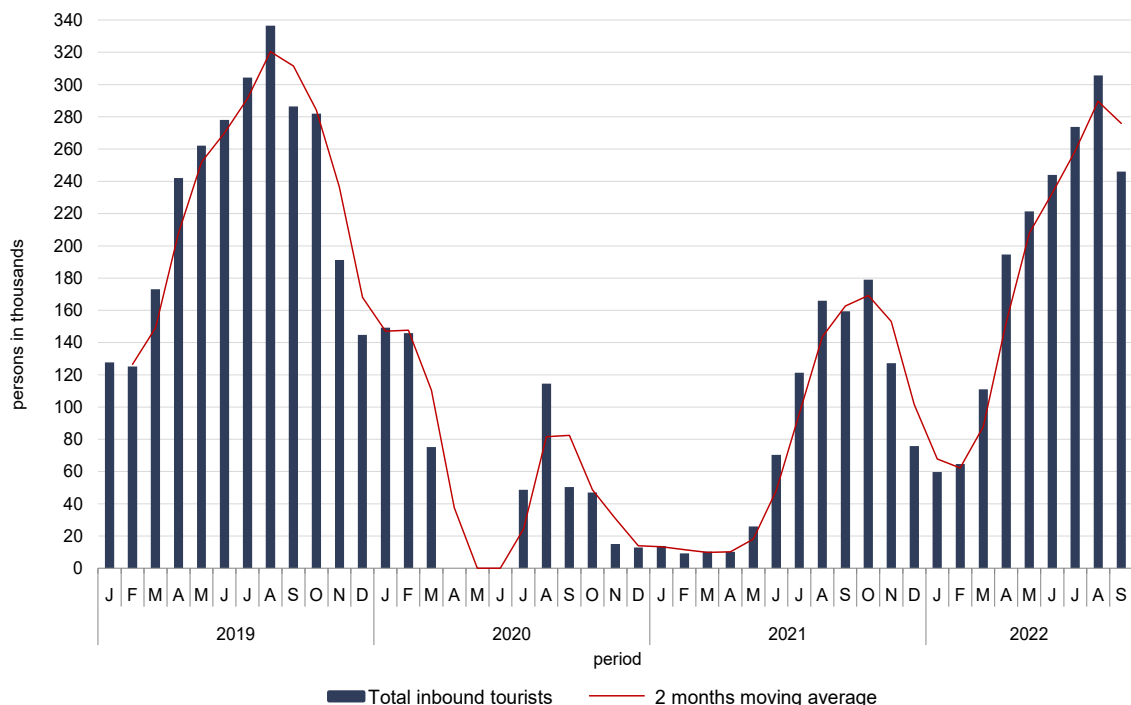


Table 1. Profile of inbound tourists by month of departure

Characteristics	September			
	2019	2020 ¹	2021	2022
Total inbound visitors	287,461	50,359	162,281	249,106
Overnight cruise passengers	970	0	2,977	3,040
Inbound tourists	286,491	50,359	159,304	246,066
Mode of travel				
Air	281,212	49,169	157,146	242,807
Sea	5,279	1,190	2,158	3,259 ^P
Sex				
Males	141,599	27,667	79,428	119,235
Females	144,892	22,693	79,876	126,831
Age group				
0-24	50,089	11,173	30,749	55,365
25-44	117,413	24,582	70,479	95,814
45-64	86,103	12,339	44,302	69,195
65 or more	32,885	2,265	13,774	25,693
Markets²				
EU	236,954	39,676	98,323	162,789
<i>of which: Euro area</i>	135,833	34,972	78,332	128,926
Non-EU	49,537	10,683	60,981	83,277
Purpose of visit				
Holiday	261,696	46,966	149,760	223,714
Business and professional	16,750	2,074	6,307	14,666
Other (including educational, religious and health tourism)	8,045	1,319	3,236	7,686
Organisation of stay				
Package	80,545	9,715	41,457	61,918
Non-package	205,946	40,644	117,847	184,148
Frequency				
First-time tourists	213,426	34,795	116,072	187,187
Repeat tourists	73,065	15,564	43,231	58,879
once a year or less	55,763	10,093	33,927	46,118
more than once a year	17,302	5,471	9,305	12,762
Duration of visit				
1-3 nights	48,007	7,014	21,744	44,010
4-6 nights	84,917	11,915	42,052	78,465
7 nights or more	153,567	31,431	95,508	123,591
Average length of stay (nights)	7.3	9.3	7.9	8.0

^P Data for September 2022 is provisional since it is an estimation resulting from delayed data communication from the source.

¹ Refer to methodological note 6.

² Refer to methodological note 7.

Note: Totals may not add up due to rounding.

Table 2. Inbound tourists by month of departure and type of accommodation

Type of accommodation	September			
	2019	2020 ¹	2021	2022
Rented accommodation	252,743	41,016	140,497	218,756
Collective	167,300	29,092	105,934	148,590
Other rented	85,443	11,924	34,563	70,166
Non-rented accommodation	33,748	9,343	18,807	27,311
Total tourists	286,491	50,359	159,304	246,066

¹ Refer to methodological note 6.

Note: Totals may not add up due to rounding.

Table 3. Total nights spent by inbound tourists by month of departure and type of accommodation

Type of accommodation	September			
	2019	2020 ¹	2021	2022
Rented accommodation	1,704,159	309,488	1,008,394	1,619,317
Collective	1,029,151	193,816	704,376	917,343
Other rented	675,008	115,672	304,017	701,974
Non-rented accommodation	375,769	161,244	247,515	354,319
Total nights	2,079,928	470,732	1,255,908	1,973,636

¹ Refer to methodological note 6.

Note: Totals may not add up due to rounding.

Table 4. Total expenditure by inbound tourists by month of departure and expenditure category

€ 000

Expenditure category	September			
	2019	2020 ¹	2021	2022
Package	64,867	6,152	35,584	57,827
Non-package	100,339	14,066	53,690	97,755
Air/sea fares	46,520	5,367	19,394	38,973
Accommodation	53,819	8,699	34,296	58,782
Other expenditure	91,798	19,595	61,171	97,880
Total expenditure	257,005	39,813	150,446	253,461

¹ Refer to methodological note 6.

Notes:

1. Expenditure estimates are rounded to the nearest thousand Euro.
2. Totals may not add up due to rounding.

Table 5. Inbound tourists, nights spent and total expenditure by month of departure and country of residence

Country of residence ²		September			
		2019	2020 ¹	2021	2022
Tourists	EU	236,954	39,676	98,323	162,789
	<i>of which:</i>				
	France	23,025	8,251	16,068	25,051
	Germany	21,864	10,949	14,743	17,895
	Italy	39,413	5,888	15,162	42,514
	Poland	9,810	3,018	9,962	13,366
	Spain	10,796	1,877 ^u	6,212	8,876
	United Kingdom	69,896	n/a	n/a	n/a
	Non-EU	49,537	10,683	60,981	83,277
	<i>of which:</i>				
United Kingdom	n/a	9,375	51,763	49,523	
Total	286,491	50,359	159,304	246,066	
Nights	EU	1,633,854	353,532	763,668	1,149,527
	<i>of which:</i>				
	France	165,195	64,044	121,742	192,713
	Germany	150,824	88,823	121,215	146,254
	Italy	262,632	89,032	155,589	247,714
	Poland	65,086	25,682	64,138	90,736
	Spain	70,331	19,032 ^u	52,970	94,886
	United Kingdom	514,586	n/a	n/a	n/a
	Non-EU	446,073	117,201	492,240	824,109
	<i>of which:</i>				
United Kingdom	n/a	93,002	417,982	385,234	
Total	2,079,928	470,732	1,255,908	1,973,636	
Expenditure (€ 000)	EU	195,344	28,481	81,612	143,703
	<i>of which:</i>				
	France	20,814	6,400	13,974	23,635
	Germany	18,721	8,988	15,450	19,335
	Italy	24,693	3,033	9,300	28,337
	Poland	7,235	1,897	6,649	11,744
	Spain	8,089	888 ^u	4,841	9,289
	United Kingdom	64,923	n/a	n/a	n/a
	Non-EU	61,660	11,333	68,834	109,758
	<i>of which:</i>				
United Kingdom	n/a	9,009	58,640	58,043	
Total	257,005	39,813	150,446	253,461	

^u Under represented - between 20 and 49 sample observations.

¹ Refer to methodological note 6.

² Refer to methodological note 7.

Notes:

1. n/a: not applicable.
2. Expenditure estimates are rounded to the nearest thousand Euro.
3. Totals may not add up due to rounding.

Table 6. Profile of inbound tourists by period of departure

Characteristics	January-September			
	2019	2020 ¹	2021	2022
Total inbound visitors	2,148,293	584,669	593,050	1,756,383
Overnight cruise passengers	12,868	893	6,816	35,951
Inbound tourists	2,135,425	583,776	586,234	1,720,432
Mode of travel				
Air	2,095,420	569,742	568,591	1,694,552
Sea	40,006	14,034	17,642	25,879 ^P
Sex				
Males	1,053,835	308,343	305,679	846,560
Females	1,081,590	275,433	280,554	873,872
Age group				
0-24	463,833	131,229	150,913	454,123
25-44	859,877	237,182	253,098	687,455
45-64	613,157	170,318	147,528	448,265
65 or more	198,558	45,047	34,695	130,588
Markets²				
EU	1,785,999	389,396	422,854	1,209,273
<i>of which: Euro area</i>	1,046,493	311,829	342,268	958,523
Non-EU	349,427	194,381	163,380	511,158
Purpose of visit				
Holiday	1,916,412	520,327	523,254	1,552,829
Business and professional	128,283	41,632	34,824	95,518
Other (including educational, religious and health tourism)	90,730	21,817	28,156	72,085
Organisation of stay				
Package	636,960	148,710	129,190	401,497
Non-package	1,498,465	435,066	457,044	1,318,935
Frequency				
First-time tourists	1,613,150	418,233	424,242	1,312,149
Repeat tourists	522,275	165,543	161,992	408,283
once a year or less	389,618	112,634	116,807	303,874
more than once a year	132,657	52,909	45,185	104,409
Duration of visit				
1-3 nights	437,385	148,013	80,922	352,538
4-6 nights	636,221	173,956	144,504	553,284
7 nights or more	1,061,819	261,808	360,808	814,609
Average length of stay (nights)	7.1	7.5	9.2	7.4

^P Data for May - September 2022 is provisional since it is an estimation resulting from delayed data communication from the source.

¹ Refer to methodological note 6.

² Refer to methodological note 7.

Note: Totals may not add up due to rounding.

Table 7. Inbound tourists by period of departure and type of accommodation

Type of accommodation	January-September			
	2019	2020 ¹	2021	2022
Rented accommodation	1,880,258	496,959	494,582	1,524,167
Collective	1,322,110	368,526	362,926	1,078,305
Other rented	558,149	128,433	131,656	445,862
Non-rented accommodation	255,167	86,817	91,652	196,265
Total tourists	2,135,425	583,776	586,234	1,720,432

¹ Refer to methodological note 6.

Note: Totals may not add up due to rounding.

Table 8. Total nights spent by inbound tourists by period of departure and type of accommodation

Type of accommodation	January-September			
	2019	2020 ¹	2021	2022
Rented accommodation	12,761,128	3,242,218	4,050,596	10,632,301
Collective	7,889,346	2,080,345	2,535,953	6,542,218
Other rented	4,871,782	1,161,873	1,514,643	4,090,083
Non-rented accommodation	2,480,593	1,139,702	1,313,532	2,096,633
Total nights	15,241,721	4,381,920	5,364,128	12,728,935

¹ Refer to methodological note 6.

Note: Totals may not add up due to rounding.

Table 9. Inbound tourists, nights spent and total expenditure by period of departure and country of residence

Country of residence		January-September			
		2019	2020 ¹	2021	2022
Tourists	Australia	40,181	2,629	580	15,192
	Austria	26,987	9,327	9,814	28,643
	Belgium	56,041	16,620	18,672	42,960
	France	190,769	57,703	93,152	203,526
	Germany	159,066	57,389	58,569	124,873
	Hungary	29,673	9,438	6,531	27,885
	Ireland	41,414	12,230	6,917	27,895
	Italy	318,200	82,445	82,564	302,704
	Netherlands	45,393	13,271	11,284	45,581
	Poland	80,209	35,711	40,664	105,040
	Scandinavia ²	93,728	16,310	14,996	56,403
	Spain	91,667	25,547	22,128	67,375
	Switzerland	38,012	9,280	12,268	29,336
	United Kingdom	498,367	126,464	124,548	325,400
	USA	38,536	7,991	8,128	29,171
	Other	387,182	101,421	75,419	288,447
	Total	2,135,425	583,776	586,234	1,720,432
Nights	Australia	395,900	25,270	4,830	194,366
	Austria	164,655	67,215	79,946	202,620
	Belgium	380,338	107,448	155,577	290,402
	France	1,465,736	399,392	846,120	1,547,105
	Germany	1,141,940	442,972	491,581	952,173
	Hungary	163,799	51,473	45,214	162,562
	Ireland	279,435	79,032	50,588	184,207
	Italy	2,049,463	816,723	941,970	1,921,977
	Netherlands	333,287	87,233	98,423	387,494
	Poland	546,905	232,994	301,175	654,792
	Scandinavia ²	666,758	127,027	134,309	446,827
	Spain	591,349	150,481	214,572	561,842
	Switzerland	260,892	72,884	121,674	213,739
	United Kingdom	3,452,459	925,203	1,071,487	2,332,441
	USA	233,881	52,946	55,199	212,377
	Other	3,114,925	743,627	751,465	2,464,011
	Total	15,241,721	4,381,920	5,364,128	12,728,935
Expenditure (€ 000)	Australia	61,004	2,902	573	29,082
	Austria	23,042	7,372	8,944	24,756
	Belgium	41,744	10,256	17,862	37,393
	France	159,212	40,906	90,091	179,669
	Germany	132,085	44,039	62,281	125,347
	Hungary	16,945	4,648	4,496	16,331
	Ireland	37,277	9,339	7,490	29,559
	Italy	196,117	45,116	57,231	195,060
	Netherlands	36,113	8,353	12,371	44,370
	Poland	54,918	19,894	30,535	74,161
	Scandinavia ²	85,615	12,596	15,747	65,264
	Spain	62,433	12,978	18,127	54,952
	Switzerland	39,167	9,491	17,150	37,259
	United Kingdom	402,960	84,549	140,812	325,344
	USA	43,501	8,181	11,430	41,051
	Other	362,915	72,217	71,584	261,329
	Total	1,755,050	392,835	566,722	1,540,927

¹ Refer to methodological note 6.

² Denmark, Finland, Norway and Sweden.

Notes:

1. Expenditure estimates are rounded to the nearest thousand Euro.
2. Totals may not add up due to rounding.

Table 10. Total expenditure of inbound tourists by expenditure category, period of departure and country of residence

€ 000

Country of residence	Package expenditure	Non-package expenditure		Other expenditure	Total
		Air/sea fares	Accommodation		
January-September 2022					
Australia	:	7,411	5,804	13,633	29,082
Austria	5,101	3,378	6,714	9,563	24,756
Belgium	6,288	6,443	9,995	14,666	37,393
France	36,733	27,025	45,366	70,545	179,669
Germany	38,439	18,061	26,486	42,362	125,347
Hungary	1,593 ^u	2,709	4,759	7,271	16,331
Ireland	4,332	5,319	7,580	12,328	29,559
Italy	27,149	25,691	51,560	90,661	195,060
Netherlands	7,794	7,124	10,853	18,599	44,370
Poland	14,675	10,417	18,879	30,190	74,161
Scandinavia ²	16,879	11,559	12,527	24,299	65,264
Spain	9,467	7,666	14,660	23,158	54,952
Switzerland	9,176	5,502	9,258	13,323	37,259
United Kingdom	100,128	44,170	66,421	114,625	325,344
USA	3,118 ^u	15,204	10,052	12,677	41,051
Other	33,458	48,572	69,534	109,765	261,329
Total	316,562	246,251	370,447	607,666	1,540,927
January-September 2021					
Australia	:	58	264	250	573
Austria	2,099	1,181	2,306	3,359	8,944
Belgium	2,596	3,100	4,944	7,222	17,862
France	15,534	13,944	22,657	37,956	90,091
Germany	16,535	9,090	13,986	22,670	62,281
Hungary	:	669	1,161	1,893	4,496
Ireland	:	987	2,178	3,417	7,490
Italy	8,242	7,393	12,130	29,466	57,231
Netherlands	2,031	1,844	2,814	5,681	12,371
Poland	5,748	4,621	7,966	12,200	30,535
Scandinavia ²	3,091	2,643	3,091	6,921	15,747
Spain	2,077	2,141	4,405	9,504	18,127
Switzerland	3,519 ^u	2,232	4,747	6,651	17,150
United Kingdom	39,502	15,134	31,923	54,251	140,812
USA	3,762	2,467	2,194	3,007	11,430
Other	9,020	13,244	18,059	31,260	71,584
Total	115,437	80,751	134,826	235,708	566,722
January-September 2020¹					
Australia	:	1,153	464	1,025	2,902
Austria	2,092	969	1,452	2,859	7,372
Belgium	1,802	1,691	2,401	4,363	10,256
France	10,223	5,956	8,617	16,110	40,906
Germany	12,505	6,031	8,661	16,841	44,039
Hungary	:	940	1,201	2,151	4,648
Ireland	1,190 ^u	1,463	2,459	4,227	9,339
Italy	5,663	7,022	10,042	22,390	45,116
Netherlands	1,139 ^u	1,626	1,659	3,929	8,353
Poland	3,847	3,456	4,645	7,946	19,894
Scandinavia ²	2,590	2,626	2,343	5,036	12,596
Spain	1,282	2,538	3,141	6,017	12,978
Switzerland	1,837 ^u	1,219	2,052	4,382	9,491
United Kingdom	21,587	12,276	15,350	35,337	84,549
USA	:	3,413	1,864	2,276	8,181
Other	10,926	17,233	14,062	29,997	72,217
Total	77,927	69,610	80,413	164,886	392,835
January-September 2019					
Australia	5,877	21,650	11,552	21,926	61,004
Austria	8,293	2,870	4,529	7,350	23,042
Belgium	10,523	6,266	9,820	15,135	41,744
France	45,431	24,403	35,318	54,059	159,212
Germany	50,012	17,118	23,918	41,038	132,085
Hungary	2,141	3,524	4,625	6,656	16,945
Ireland	7,533	6,001	8,618	15,126	37,277
Italy	34,274	31,625	44,864	85,354	196,117
Netherlands	9,279	5,831	7,450	13,554	36,113
Poland	12,809	8,468	12,503	21,138	54,918
Scandinavia ²	24,118	13,673	16,436	31,388	85,615
Spain	14,403	10,131	14,194	23,705	62,433
Switzerland	10,698	6,295	8,566	13,608	39,167
United Kingdom	132,001	52,240	72,788	145,931	402,960
USA	4,540 ^u	16,479	10,077	12,405	43,501
Other	71,545	84,691	75,375	131,304	362,915
Total	443,476	311,264	360,634	639,676	1,755,050

: Unreliable, less than 20 sample observations.

^u Under represented - between 20 and 49 sample observations.¹ Refer to methodological note 6.² Denmark, Finland, Norway and Sweden.

Notes:

1. Expenditure estimates are rounded to the nearest thousand Euro.

2. Totals may not add up due to rounding.

Table 11. Per capita expenditure of inbound tourists by expenditure category, period of departure and country of residence

€

Country of residence	Package expenditure	Non-package expenditure		Other expenditure	Total expenditure per capita
		Air/sea fares	Accommodation		
January-September 2022					
Australia	:	544	532	897	1,914
Austria	699	157	347	334	864
Belgium	828	182	314	341	870
France	754	174	314	347	883
Germany	879	221	366	339	1,004
Hungary	559 ^u	107	214	261	586
Ireland	798	236	382	442	1,060
Italy	612	99	237	300	644
Netherlands	713	204	355	408	973
Poland	578	131	250	287	706
Scandinavia ²	808	324	447	431	1,157
Spain	712	141	309	344	816
Switzerland	1,193	251	458	454	1,270
United Kingdom	818	217	419	352	1,000
USA	1,009 ^u	581	451	435	1,407
Other	924	191	326	381	906
Total expenditure per capita	788	186	327	353	896
January-September 2021					
Australia	:	101	470	432	988
Austria	794 ^u	165	382	342	911
Belgium	912	195	362	387	957
France	942	181	331	407	967
Germany	929	221	396	387	1,063
Hungary	:	121	251	290	688
Ireland	:	170	428	494	1,083
Italy	775	103	271	357	693
Netherlands	746	215	420	503	1,096
Poland	680	143	280	300	751
Scandinavia ²	708	248	400	462	1,050
Spain	760	109	287	430	819
Switzerland	1,486 ^u	225	539	542	1,398
United Kingdom	913	185	488	436	1,131
USA	1,216	482	526	370	1,406
Other	936	200	330	414	949
Total expenditure per capita	894	176	364	402	967
January-September 2020¹					
Australia	:	500	256	390	1,104
Austria	623	162	265	307	790
Belgium	554	126	209	262	617
France	559	150	237	279	709
Germany	649	158	261	293	767
Hungary	:	111	161	228	493
Ireland	532 ^u	145	270	346	764
Italy	443	101	209	272	547
Netherlands	361 ^u	161	200	296	629
Poland	445	127	184	223	557
Scandinavia ²	566	224	242	309	772
Spain	391	114	164	236	508
Switzerland	702 ^u	183	359	472	1,023
United Kingdom	461	154	261	279	669
USA	:	457	285	285	1,024
Other	590	207	207	296	712
Total expenditure per capita	524	160	227	282	673
January-September 2019					
Australia	1,106	611	395	546	1,518
Austria	743	177	307	272	854
Belgium	729	150	264	270	745
France	716	191	300	283	835
Germany	711	192	311	258	830
Hungary	468	140	218	224	571
Ireland	638	203	333	365	900
Italy	527	125	222	268	616
Netherlands	647	187	282	299	796
Poland	553	148	240	264	685
Scandinavia ²	723	226	329	335	913
Spain	583	150	233	259	681
Switzerland	878	242	373	358	1,030
United Kingdom	678	172	313	293	809
USA	971	486	346	322	1,129
Other	855	277	294	339	937
Total expenditure per capita	696	207	287	300	822

: Unreliable, less than 20 sample observations.

^u Under represented - between 20 and 49 sample observations.¹ Refer to methodological note 6.² Denmark, Finland, Norway and Sweden.

Table 12. Profile of overnight cruise passengers by month of departure

Characteristics	September			
	2019	2020 ¹	2021	2022
Total overnight cruise passengers	970	-	2,977	3,040
Sex				
Males	461	-	1,346	1,411
Females	509	-	1,631	1,629
Age group				
0-19	1	-	2	39
20-39	23	-	76	159
40-59	167	-	374	972
60-79	694	-	2,358	1,751
80 or more	85	-	167	119
Markets²				
EU	226	-	57	124
<i>of which</i> : Euro area	51	-	49	114
Non-EU	744	-	2,920	2,916

¹ In view of the COVID-19 situation, the last cruise liner call was on 10 March 2020.

² Refer to methodological note 7.

Table 13. Profile of overnight cruise passengers by period of departure

Characteristics	January-September			
	2019	2020 ¹	2021	2022
Total overnight cruise passengers	12,868	893	6,816	35,951
Sex				
Males	5,962	426	3,093	16,759
Females	6,906	467	3,723	19,192
Age group				
0-19	867	1	255	3,709
20-39	1,104	19	529	5,055
40-59	3,284	31	1,168	12,572
60-79	6,637	446	4,508	13,798
80 or more	976	396	356	817
Markets²				
EU	7,259	14	1,126	13,148
<i>of which</i> : Euro area	6,182	11	1,099	12,936
Non-EU	5,609	879	5,690	22,803

¹ In view of the COVID-19 situation, the last cruise liner call was on 10 March 2020.

² Refer to methodological note 7.

Methodological Notes

1. This release focuses on Inbound Tourism, which comprises activities of non-resident visitors travelling to Malta (i.e. outside their usual environment) and staying for not more than 12 consecutive months for leisure, business or other (corresponding) purposes.
2. Inbound tourism data are collected from an ongoing frontier national survey known as Tourstat. Tourist air departures are collected through a continuous survey carried out at the departure lounge of the Malta International Airport. A two-stage sampling design is used to collect data on air passengers. In the first stage, alternate days and nights are selected. In the second stage, within each shift, a sample of air passengers is selected systematically. Every crossing air passenger is counted and respondents are selected using a pre-defined interval of 1:20, with the exception of July 2020 and the period October 2020 to June 2021, where the pre-defined interval was 1:10.
3. Tourstat measures the number of tourist trips carried out during a particular reference month. These differ from the number of tourists in that the same person can make more than one trip during the same period.
4. Tourist sea departures is supplemented by administrative data provided by ferry operators.
5. Sea tourist data for the period May-September 2022 is provisional since it is an estimation resulting from delayed data communication from the source. This estimation is reflected in all the figures in this release.
6. Statistics in this News Release should be interpreted in the context of the COVID-19 situation. In view of the pandemic, the Tourstat survey was suspended between 12 March and 30 June 2020. Statistical methods were applied to cover the period from 13 March to 20 March 2020, when scheduled passenger flights were still in operation.

The following is the related chronology of events which happened during 2020 in Malta:

28th February	People flying in from Italy, China (including Hong Kong), Singapore, Japan, Iran and South Korea from 26th February onwards needed to stay in quarantine for 14 days upon arrival.
8th March	Flights from/to Milan were suspended.
10th March	Flights from/to Italy were suspended.
10th March	The last cruise liner call.
11th March	Flights from/to France, Switzerland, Germany and Spain, were suspended.
11th March	People flying in from France, Switzerland, Germany and Spain, needed to stay in quarantine for 14 days upon arrival.
13th March	All people flying in from all destinations needed to stay in quarantine for 14 days upon arrival.
18th March	The last Virtu' Ferries service for passengers between Malta and Sicily.
21st March	All flights from/to all destinations were suspended.
1st July	Re-opening of Malta International Airport. The first group of destinations that reopened for travel comprised: Germany, Austria, Italy, France, Spain, Poland, Cyprus, Switzerland, Iceland, Slovakia, Norway, Denmark, Hungary, Finland, Ireland, Lithuania, Latvia, Estonia, Luxembourg, Czech Republic, Greece and Croatia.
15th July	Restrictions on all other flight destinations were lifted.
21st August	First cruise liner call since March 2020.

Sources: Malta Tourism Authority, Virtu' Ferries, Transport Malta and Valletta Cruise Port.

7. Owing to the UK's exit from the European Union (with effect from 1 February 2020), UK data is statistically classified as Non-EU from February 2020. Comparability between cumulative tables and also between comparative periods should be treated with caution.
8. The monthly passenger departures data published by the Malta International Airport cannot be equated to the number of inbound tourists, because the former is inclusive of departing Maltese and transit passengers.
9. Data on cruise passengers who spent at least one night berthed on board their cruise ship in Malta ('Overnight Cruise Passengers') is compiled on the basis of administrative records supplied by Transport Malta.
10. Arrivals and nights spent in time-share accommodation are being categorised in 'Non-rented Accommodation' instead of 'Collective Accommodation' as per Eurostat recommendation. In this regard, there may be minor differences in these statistics and statistics published in tourism supply due to the fact that hotels report time-share accommodation under 'Collective Accommodation'.
11. Prior to comparing and interpreting differences between demand-side (based on Tourstat) and supply-side (based on Accomstat) tourism statistics, users are strongly advised to consult concept 15.4 of the NSO's metadata file: <https://metadata.nso.gov.mt/reports.aspx?id=37#>
12. Data included in this release are based on sample data and are therefore subject to sampling error. Sampling error is measured by a quantity known as the margin of error, which in turn, expresses the variability between the true population parameters and their corresponding sample estimates. In the table below, the margin of error is used to construct a set of 95 per cent confidence intervals for the main indicators, which gives an indication of where the true population parameters lie.

Sampling variability of inbound tourism figures

	Estimate	Margin of error	95% confidence interval
Inbound tourists	246,066	2,527	246,066 ± 2,527
Total nights	1,973,636	115,185	1,973,636 ± 115,185
Total expenditure (€ 000)	253,461	8,570	253,461 ± 8,570

13. Definitions:

- **Usual environment:** The geographical area, though not necessarily a contiguous one, within which an individual conducts his regular life routines and shall be determined on the basis of the following criteria: the crossing of administrative borders or the distance from the place of usual residence, the duration of visit, the frequency of visit, the purpose of visit.
- **Resident:** A person is considered to be a resident of Malta/Gozo if:
 - a. S/he has lived for most of the past 12 months in Malta/Gozo;
 - b. S/he has lived in Malta/Gozo for less than 12 months but intends to return within a year to settle here.
- **Traveller:** A person who moves between different geographic locations, for any purpose and any duration.
- **Visitor:** The three fundamental criteria used to distinguish visitors from travellers are:
 - a. **The trip should be to a place other than that of the usual environment**, which would exclude short-distance local transport and commuting, i.e. more or less regular trips between the place of work/study and the place of residence;
 - b. **The stay in the place visited should not last more than twelve consecutive months**, beyond which the visitor would become a resident of that place (from the statistical standpoint);
 - c. **The main purpose of the visit should be other than the exercise of an activity remunerated from within the place visited**, which would exclude migratory movements for work purposes.
- **Tourist:** A visitor who stays at least one night in a rented and non-rented accommodation in the place/country visited.
- **Inbound tourism:** Comprises the activities of non-resident visitors travelling to Malta (i.e. outside their usual environment) and staying for not more than 12 consecutive months for personal, business or other purposes.
- **Total nights spent:** Nights which a guest actually spends or is registered to spend in a rented accommodation establishment or in a non-rented accommodation.
- **Average length of stay:** The number of nights spent divided by the number of trips during a specified reference period.
- **Rented accommodation:** Consists of the following two sub-categories:
 - a. **Collective accommodation:** comprises hotels, guesthouses, hostels, tourist villages, holiday complexes, Bed & Breakfast and campsites.
 - b. **Other rented accommodation:** comprises holiday furnished premises (farmhouses, flats and villas), host families, marinas, paid-convents, rented yachts and student dormitories.
- **Non-rented accommodation:** Comprises own private residence (owned dwellings, owned caravans and yachts), staying with friends or relatives (even if charged - includes also friends' private apartments) and other private accommodation (oil rig, free-convents or timeshare, etc.).
- **Total expenditure:** Refers to the amount that is going to be paid for the acquisition of consumption goods and services, as well as valuables during tourism trips. It includes expenditures by visitors themselves, as well as expenses that are paid for or reimbursed by others. The total expenditure is broken down by the following expenditure items:
 - a. **Package expenditure:** refers to the whole amount of money spent on transport, accommodation and other services such as rental of a car, activities or outings during the trip.
 - b. **Non-package expenditure:** is the amount of money spent on transport and accommodation reported separately.
 - c. **Other expenditure:** is the amount spent on shopping, souvenirs, tickets for concerts or sports events, entrance to museums or zoos and day excursions during a tourism trip. It also includes durables and valuable goods, that is, the amount spent on cars, computers, paintings, jewellery and works of art.

14. More information relating to this news release may be accessed at:

Sources and methods: https://nso.gov.mt/en/nso/Sources_and_Methods/Unit_C3/Tourism_Statistics/Pages/TOURSTAT-Survey.aspx

Statistical concepts: <https://metadata.nso.gov.mt/concepts.aspx>

Metadata: <https://metadata.nso.gov.mt/reports.aspx?id=37>

Statistical database: <https://statdb.nso.gov.mt/start>

15. References to this news release are to be cited appropriately.

For further assistance send a request from: <https://workflow.gov.mt/Runtime/Runtime/Form/01+NSO+Request+for+Statistical+Information/?language>

16. A detailed news release calendar is available on:

https://nso.gov.mt/en/News_Releases/Release_Calendar/Pages/News-Release-Calendar.aspx